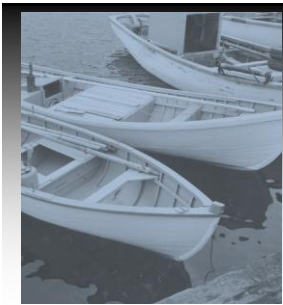


WOODEN BOAT MUSEUM OF NEWFOUNDLAND AND LABRADOR

Report of Activities 2011 - 2012



Wooden Boat Museum
of Newfoundland and Labrador



Message from Chairman of the Board Frank French

This past year has been a very successful one as we continue to see a significant number of accomplishments as the Museum carries out its mandate. While finances continue to be a challenge we move forward with the positive attitude that what we are doing is important and that time is of the essence. We are encouraged by the knowledge that we are being supported by an increasing number of organizations and individuals. As you read this report you will get a glimpse of the activities of our dedicated staff and volunteers.

Since our formation in 2008 we have focused on establishing a solid base from which to grow. Immediately we started the enormous task of communicating our goals and objectives to the Provincial community in order to elicit their support, financial and otherwise. At the same time we began the daunting task of initiating some of the programs and projects we felt were important; these include the wooden boat documentation initiative, workshops, fundraising, completion of a Provincial Travelling Exhibit- *“Before Fibreglass - The Wooden Boats of Newfoundland and Labrador”*, etc. On all fronts we have been successful and although there is much more to do, we are proud of what the Museum has done.

In our future we see moving forward with several significant new and ongoing programs and projects:

- the wooden boat documentation initiative needs to continue and expand, based on the template we have developed to date;
- the workshop program is continually being fine tuned to meet member needs;
- we see encouraging the use of wooden boats in recreation through our Boats in the Harbour program, (use will require building and building will preserve skills);
- we see continuing to work on a partnership with the Department of Education so that every Newfoundland school student will be aware of the role that the wooden boat has played in our past;
- we see continuing the partnership with the Town of Winterton in the use of the present Museum building and office space;
- in challenging financial times we have to continue and expand our sponsorship and fund raising programs;
- it is imperative that we continue to reach out to other areas of the Province in order to make them feel a part of the Museum and its activities.

While there will be challenges in the future, they will seem much less significant if we reflect on the accomplishments of our past. Remember our motto “Look Aft and Learn”.

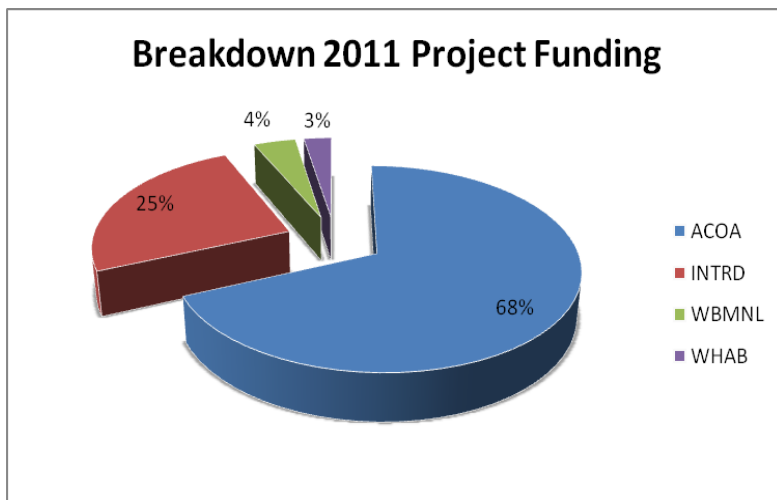
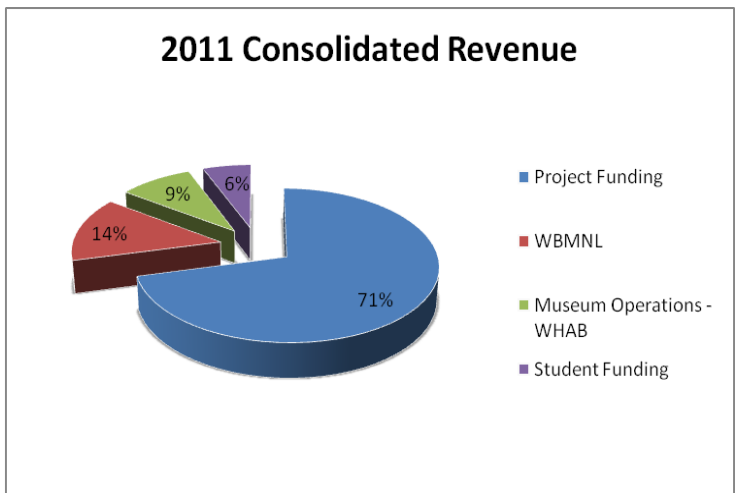
Message from Treasurer of the Board Wallace Pinhorn

On behalf of the Board of Directors of the Wooden Boat Museum of Labrador Inc. (WBMNL), I am pleased to provide the financial report for the Fiscal Year 2011.

Revenues from contracts with ACOA and INTRD and from Museum activities and programs allowed WBMNL to add a 1395 sq foot extension to the Museum building, complete the exterior of the Boat Building Shed, conduct a boat building workshops at Flatrock and Winterton, complete its Provincial Travelling Exhibit, start formal documentation work for its Wooden Boat Field Guide and continue with its Annual Conference and Quarterly Newsletter. In addition our partnership with the Town of Winterton and its Heritage Advisory Board (WHAB) allowed the operation of the WBMNL Museum at Winterton for the 2011 Tourist Season.

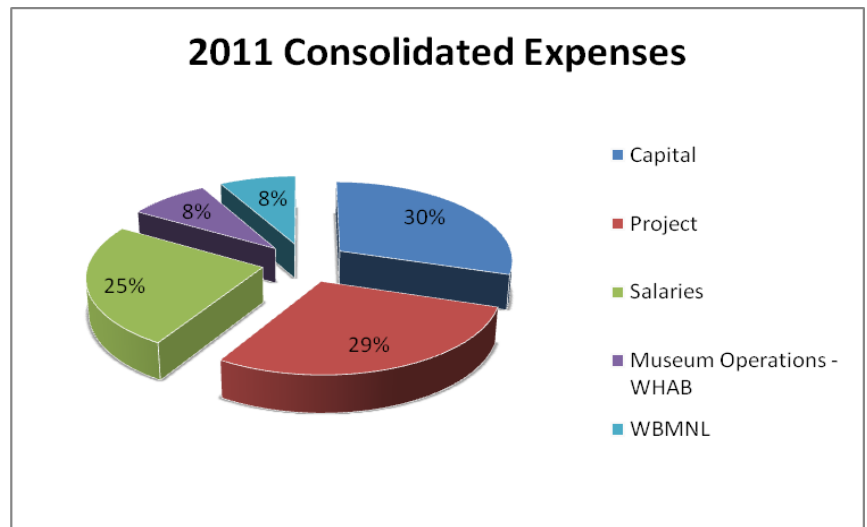
Revenue to support Museum activities flows from the WHAB and the WBMNL for its operation and development. The charts below show categories of revenue, funding and expense for the consolidated operation.

Consolidated Revenue for 2011 was \$368,000. Project Funding accounted for 71%, WBMNL 14% and WHAB 15%. WBMNL's Fundraising Gala held at Holiday Inn St. John's in May 2011 accounted for 23% of its contribution.



Project Funding for 2011 was \$260,000. ACOA's Innovative Community Fund (ICF) provided 68%, the Province's Regional/Sectoral Diversification Fund (RSDF) 25%, WBMNL 4% and WHAB 3%.

Consolidated Expenses for 2011 were \$408,000. Museum Construction accounted for 30%, Developmental Projects 29%, Salaries 25%, WBMNL and WHAB Expenses 8% each.



ACOA currently provides 60% funding toward approved Projects. We were made aware of ACOA's intent to reduce its level of participation in future contracts. To prepare for this change, in 2011 WBMNL commissioned a Diagnostic Assessment and Revenue Development Report to determine ways to generate Museum Revenue including continuing with its Gala, Workshops, and Conferences and adding Lotteries, Direct Marketing, Sponsorships, Museum products and services.

Pressure for WBMNL to become more self sustaining will continue as ACOA reduces its support to the Provincial level. It will be important for the WBMNL Board and its Members to focus on Revenue Development in order to allow it to continue to deliver on its Mission and Objectives.

Audited Statements for WBMNL are shown within this Annual Report.

The Museum in Winterton Melvin Green, Liaison Chair

The Winterton Heritage Advisory Board Liaison Committee was formed to co-ordinate the activities of the Winterton Heritage Advisory Board and Wooden Boat Museum of Newfoundland and Labrador. Its objectives are planning for the Museum season and seeking the necessary funding to carry out these plans. This includes staffing, organizing exhibits, developing other heritage programs and directing the operations of the Museum throughout the season.

Funding for the Museum operations is received from Department of Tourism's CEDP Operational Support, Canadian Museums Association Young Canada Works program, Government of Canada's Canada Summer Jobs program. In 2011 the Assistant manager was hired through a Targeted Wage Program. In 2012, five workers were employed through a Job Creation Program. Funding is supplemented by Museum admissions and product sales.

Volunteers play an important role in the Museum programming. An Artist in Studio program began in 2011 and featured local wood carver Kevin Coates, artist Florence Pinhorn and rug hooker, Emma Hiscock. In 2012 the program was expanded and each Saturday local artists/entertainers provide tourists with demonstrations of their skills. 2012 Artists in Studio volunteers include:



Artist Florence Pinhorn and wood carver Kevin Coates

Lori Harnum- Pastel demonstration
Melvin Green / Reg Powers - Traditional Newfoundland Music
Marjorie Powers / Monica Hindy - Knitting
Rhoda Hedd - Traditional Rug Hooking
Kevin Coates - Wood Carving
Howard Cooper - Traditional Newfoundland Music
Howard Sooley / John Warren - Traditional Newfoundland Music
Joshua Young - Birch broom making.
Florence Pinhorn - Pastel demonstration

A Canada Day Open house is held each year on July 1st and a Family Fun Day is held in August. The 2012 Family Fun Day will be held on August 12th.



Birch Bark Canoe donated by
Lloyd Hicks

In 2012, the Museum has moved away from guided tours and has focused on daily programming which involves talks, demonstrations and a heritage walk. Details of the daily programming can be found on our website – woodenboatnl.com.



Our new Provincial Travelling Exhibit titled ***“Before Fibreglass - The Wooden Boats of***

Newfoundland and Labrador” is now set up throughout the Museum and tells the story of the wooden boat in this province from prehistory to today.



Restored Gander River Boat -
boat donated by Greg Osmond

In 2011 the Museum restored the Gander River boat and the Grandy dory. In 2012 they were put on display in the Museum's new extension. The



Restored Grandy Dory – Dory donated by John
Quinton

Indeavour Exhibit was disassembled and set up across the road from the Museum as a permanent outdoor exhibit.

The WHAB held a heritage night with the theme the “Fun We had”. The heritage night was a sold out show and was very well received by all who attended. The night consisted of a 10 min video highlighting old photos and videos from the community, a skit style play showcasing old games and ways to have fun. The night was finished off with a snack of homemade bread with molasses and an Open Mike.

Funding was obtained in March 2012 to conduct a Professional Needs Assessment. The main recommendations were related to environmental controls (temperature, relative humidity, and light) procedural policies, storage, staff training and digitization. This had implications for changes to the original section 2 of the building. Future funding requests will be directed towards these needs.

Wooden Boat Documentation Committee Bruce Whitelaw, Chair



MI Student Cheryl Slade taking lines of Earl Freeman's boat in Champneys West

During the 2011 season boat documentation was undertaken by Jennifer Gushue and Cheryl Slade. Boats were selected due to their age, uniqueness and historic significance. Lines were lifted and recorded while the history of folklore of the builders and of the boats was recorded. Boats were documented in the Bonavista Peninsula area and the Avalon. The boats documented on the Bonavista Peninsula belonged to Darrell Freeman and Earl Freeman of Champneys West (punts), Gerald Bashforth of

Bonavista (motor boat) and Henry Vokey's schooner, Trinity. On the Avalon the boats documented belonged to Eric Blundon of Bay de Verde (speedboat), Kevin Broderick of Bay de Verde (motor boat), Earl and Oakley Johnson of North Harbour (motor boat) and the Arnold's Cove Jack Boat.

In the spring of 2012, the Documentation Committee selected Glovertown as the location for the field documentation project and hired folklore researcher Crystal Braye and naval architect student Mitchell Cooper to carry out fieldwork. Through a preliminary meeting held on May 29, a working relationship was established with Janes House Museum



Sammy Feltham of Glovertown chats with MI student Mitchell Cooper

Committee in Glovertown and Parks Canada via nearby Terra Nova National Park.

Fieldwork was conducted by Crystal Braye and Mitchell Cooper for two weeks at the end of June, and followed up with a second trip for one week in July. Research yielded audio by eighty-four year old master builder Samuel Feltham and several hundred photographs of wooden boats, builders, tools, and miscellaneous events, items, and locations. Lines were lifted and

construction measurements were taken from a dory, a speed boat, and a rodney. Additional measurements were taken from two half-breadth motor boat models.

Since returning from Glovertown, researchers have begun to prepare material collected for presentation. Mitchell Cooper is currently creating lines plans, three-dimensional hull models, and construction drawings for all documented boats, while Crystal Braye is editing audio and video files and preparing all complimentary contextual documentation.

In preparation for material presentation, Bruce Whitelaw and Crystal Braye have been in



Steward Sturge's rodney - Salvage

consultation with Graham Blair Designs to redesign the WMBNL website. In addition to reorganizing current web content, Graham Blair will also assist with online layout of all Glovertown research, including text, audio/video clips, and pictures. Results of the Glovertown Documentation Project will be presented at the 5th Annual Wooden Boat Conference in Winterton.

To compliment exhibition via the WBMNL, Janes House Museum Committee and Parks Canada will work with researchers to design a display that will be housed in Glovertown. At minimum this will include the presentation and interpretation of material donations acquired during fieldwork, as well as duplicate copies of all raw documentation (ie. lines plans, constructions drawings, three dimensional hull models, audio, video, pictures, and field notes). Additionally, each boatbuilder that participated

models taken from their boats as well as duplicate copies of audio/visual materials collected with their cooperation.

Once the project is complete, methodology and outcomes will be assessed to develop a working model that can be used for future documentation work.

Wooden Boat Building Workshop Committee Jim Dempsey, Chair

The focus of the 2011 Workshop program was the construction of a Fogo Island punt. The punt was built in two stages. The first was a twelve week program from mid April to early July and was held at Dawna Vivian's shed in Flatrock. The punt was completed at the Wooden Boat Museum in Winterton on Saturdays through July and August. The construction was documented in a blog on the WBMNL website and in presentations to the annual WBMNL conference in Trinity and to a combined meeting of the Master Mariner's Association and the Marine Engineers society.

In addition to increasing public awareness of small wooden boat construction in the NE Avalon area, the objectives of the workshop were:

- Build a small wooden boat from start to finish;
- Use a combination of traditional and contemporary design and construction techniques that would allow an amateur builder to build a traditional small craft;
- Provide amateur builders with an opportunity to learn or improve some of the woodworking skills necessary for wooden boat building; and
- Make use of materials that could be obtained from commercial sources.

The boat selected for the Flatrock workshop was a 14 ft. 4 in. punt that had been built several times in the past by Mr. Frank Lane of Tilting, Fogo Island. After the 2010

WBMNL conference, Jerome Canning took the lines from the half model for this boat and created a table of offsets. Bruce Whitelaw entered Jerome's offsets into the museum's CAD program and created the lines for the vessel. To create a full scale design, workshop participant lofted the lines on a loft floor. The full scale lines were used to create permanent drawings, templates, moulds and clamping jigs for future use by the museum.

The workshop followed the naming convention familiar to WBMNL members. Participants quickly became familiar with this terminology and labeling abbreviations.



Workshop Participants - Flatrock



Flatrock Workshop participants squaring the frame molds

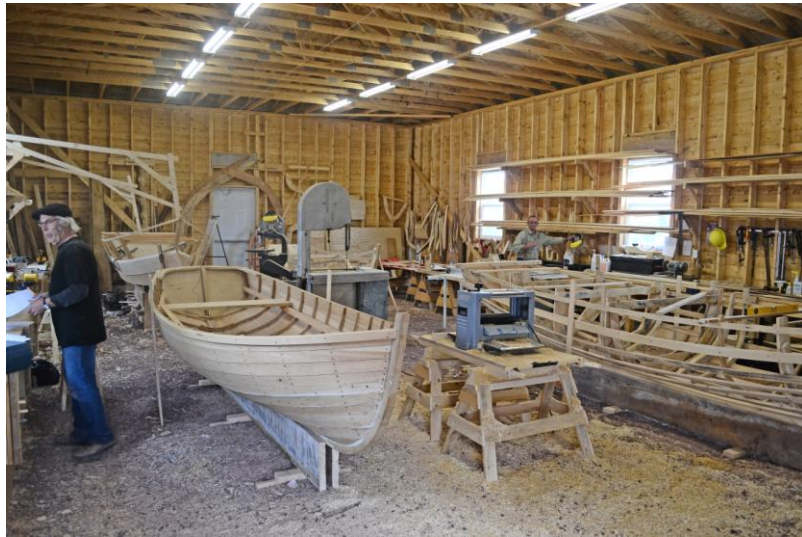
During the Flatrock workshop, participants worked through all phases of construction from set up to laying the keel and stem, to setting up moulds, to framing, to planking. At the end of the Flatrock workshop, the punt was nearly complete, lacking only a few planks and finishing touches such as thwarts, knees, and breast hook.

The summer Saturday workshop provided an overview of traditional small boat building techniques and also provided an opportunity to complete the punt that had been built in Flatrock. Work took place in the museum display areas using the Samuel Andrews punt frame and the Frank Lane punt.

The selection of materials and construction techniques in the “Flatrock Punt” has led to discussion of the museum’s promotion of traditional boat building values. One of the objectives of the workshop was to build a traditional boat with materials obtained from a lumber yard and not from traditional harvesting. The keel and stem were limited in thickness to 1 1/2 inches, so that milled 2x4 or 2x6 lumber could be used. Many observers were disappointed that the boat was planked with clear, kiln dried pine. The most controversial decision, however, was to use laminated rather than cut or steamed timbers. While not traditional, many WBMNL members now appreciate the virtues of lamination in the ease of construction, the increase in strength, and overall reduction of the weight of the boat.

Although there was interest initially in taking the Flatrock Punt to completion and launching, the hull is now being used for instruction in the 2012 workshop program.

During the summer of 2012, the Wooden Boat Museum will offer two workshop programs where wooden boat enthusiasts will actively learn the skills and traditions associated with building traditional Newfoundland small craft.



WBMNL Boat Building Workshop Shed – Winterton, NL

Weekend and week-long workshops will provide an opportunity for participants to work through the fundamentals of small boat building. The weekend program will be spread over eight Saturdays between July 7 and August 25. Week-long workshops are scheduled for August 7-11 and August 21-25. The week-long workshops will overlap with the weekend workshop program to provide maximum opportunity for participation.

Sponsorship Committee

Cle Newhook, Chair

The Wooden Boat Museum has had great success historically in attracting project funding from a range of government departments and agencies. At the same time a clear message has recently been given to the Board of Directors that the Museum cannot continue to depend upon the same level of funds from these sources for long-term financial viability of the Museum. This is due in part to the fact that it is not sensible to depend upon continuing availability of these funds and also in part through changes in government funding policies. A secondary message is that it is time for the Museum to become weaned off government funding in favor of greater self-sufficiency and an ability to attract funds from other sources. A cursory glance at the Treasurer's Reports will serve to demonstrate the Museum's historical dependence on government funding and that new strategies have to be developed and implemented to attract other sources of funding.

To that end sponsorship and partnerships with the private sector and designated trust funds has been identified as one of the key strategies toward maintaining the Museum's future sustainability.

Sponsorship efforts with past funding have been focused on developing a sponsorship information package. This package is now ready to present to potential sponsors. The package includes general information about the WBMNL and individual sponsorship sheets. Identified areas where the Museum will be focusing are as follows:

- Travel and Support for professional exhibit interpretation and Intangible Cultural Heritage Research staff
- Boat Acquisition and Restoration
- Wooden Boat Documentation – Professional Staff and Expenses
- Special Documentation Projects – current program consists of Documenting Henry Vokey Schooner Project (a total of \$42,015 was raised 2009-2011 to hire Springwater Productions to produce an hour long documentary that will be aired on CBC in 2012)
- Field Guide Package (includes lines plans, construction drawings, digital photography and edited interviews)
- Field Documentation Courses
- Traditional Wooden Boats – Education Workshops – Boat Builder / Instructor
- Public and Membership Communications
 - Annual Conferences
 - Newsletter
 - Outreach Program
 - Website Maintenance
- Audio / Visual Room

In addition to the sponsorship sheets, Henge Productions was contracted to produce a 5 minute DVD that introduces the Museum and its projects to potential sponsors.

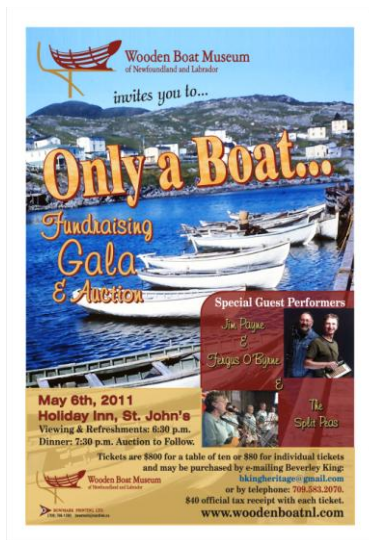
The strategy identified by the Sponsorship Committee and endorsed by the Board of Directors is to concentrate efforts over two distinct phases. In the first phase the committee has drawn up a list of best prospects. In the second phase contact will be established by either Board members who already know the contacts or failing that by the Committee members. Once potential interest is established the Committee will arrange face to face meetings to explore options as the most effective communication tool. Letters, emails and telephone messages are all too easily ignored.

The Sponsorship Committee has met with several business enterprises over that last few months to explore potential partnerships with the Museum. The first priority is to identify funding to enable us to take our Provincial Traveling Exhibit to the various regions of the province. There has been some success on this front over the past few months including securing donations towards the Unveiling Reception held at Queen's College, Memorial University. The Reception was well attended and coincided with discussions with the Department of Education regarding a potential partnership to enable the Museum to travel the Exhibit to schools around the province. As a result of meetings with Husky Energy a comprehensive proposal has been developed and submitted to them to help offset the expenses of taking the Provincial Travelling Exhibit to various regions of the province. A similar proposal has been submitted to Technip Canada Ltd. The latter has indicated their interest in the Museum and will make every attempt to set aside some funds in their allocation for 2012.



In addition to the above initiatives the Museum has received at least one unsolicited donation from a marine-based business enterprise.

Securing sponsorship funds is a slow process and there are few shortcuts. Concise and clear information is critical to potential funders as well as establishing a clear understanding of what mutual benefits could be accrued through a partnership with the Museum. Knowing the funding policies and objectives of potential funders is a key factor in sponsorship process. Most businesses have already identified what sorts of projects they will support and it is a waste of time approaching them if there is not a fit. It is also critical to secure the attention of senior managers or company designates who are charged with the task of processing the many requests that are made to them and deciding which of them they should support.



Special Events

“Only a Boat” Fundraising Gala Jennifer Sheppard - Chair

Going once, going twice, SOLD! Our 1st Fundraising Gala and Auction “Only a Boat” held May 6th, 2011 at the Holiday Inn was a huge success.

We filled over 250 seats, with huge corporate support of 11 tables and returning the museum a profit of over \$18,000. Our Master of Ceremonies for the event was Mark Critch and it is fair to say that everyone in the

room were laughing and well entertained. Coupled with Chris O’Dea as our Auctioneer, we had a complete package for a great evening. To add to the evening we had music by Jim Payne and Fergus O’Byrne, as well as the Split Peas which rounded out the night.

Not only did we have great food, drinks, and entertainment but the items donated on live and silent auction were marvelous, a real mix of things from jewelry to artwork to ferry crossings to seafood. There are just too many donors to name, however as Gala Chair, I was overwhelmed by the support for the event overall.

As you know we are working hard to raise our profile in the community and province in general. Events like this, where we see such huge support, is very up-lifting as a group of dedicated volunteers give of their time in hopes to see a piece of our heritage persevered and passed on.

The Museum dedicated its first Gala to the late Fred Green, one of the key visionaries behind the formation of the Wooden Boat Museum of Newfoundland and Labrador. “Only a Boat” was written by Fred after he and his father built a Rodney using three piece moulds that had been in their family for generations. “Only a Boat” can be found on our website under the “About Us” section.



Gala photos by Sharon Kennedy

Again, thank you to our Gala Committee, Board of Directors, volunteers, donators and participants for your support. Our next Gala is scheduled for May 4, 2013 – looking forward to seeing you there!

Special Events Conference 2011 – Trinity, NL



The 4th Annual Wooden Boat Conference was held in Trinity on September 23-24th, 2011. Seventy registered for the conference and twenty-two participated in the Spouse's program.

The event began with a visit to Henry Vokey's boatshed to see the 44' wooden schooner Henry is constructing in his backyard. Everyone thoroughly enjoyed spending time with the Master of the trade!

Friday evening a Meet and Greet was held at the Rising Tide Theatre. The WBMNL's Provincial Travelling Exhibit – *“Before Fibreglass - Wooden Boats of Newfoundland and Labrador”* – was on display for the first time. The exhibit displayed boat models, fishing nets and boatbuilding tools, along with 26 storyboards and 5 technical units



Henry & Joe Vokey

The Saturday sessions included presentations by:

- Sharon Vokey - The Vokey Family of Boat Builders;
- Dale Jarvis, Heritage Foundation of NL - interviews with Tilting boat builder Frank Lane and Workshop participant Frank French
- Jim Dempsey, Workshop Coordinator - Report on the Flatrock Boat Building Workshops held April – July, 2011
- Edith Sampson - Presentation on the Sir William Ford Coaker Foundation
- Springwater Production - Sneek preview of the Vokey Schooner Documentary to be completed after the launch of Henry's schooner

The afternoon finished up with a discussion on Forest Advocacy and the AGM.



Beverley King, Hilary Cass; Jennifer Gushue, Bruce Whitelaw, Chris Osmond (photo courtesy of Denis Flynn)

Over 100 people attended the Conference Dinner. Guest speakers included Ross Wiseman, MHA Trinity North and Scott Simms MP Bonavista-Gander-Grand Falls-Windsor. WBMNL Top Quality Awards were presented to Bruce Whitelaw, Hilary Cass and Jennifer Gushue – travelling exhibit designers.

The dinner ended with the presentation of an Honorary Life Membership to Hilary Cass. As usual, the Conference concluded with our Kitchen Party.



Bruce Whitelaw presents Honorary Life Membership to Hilary Cass (photo courtesy of Denis Flynn)

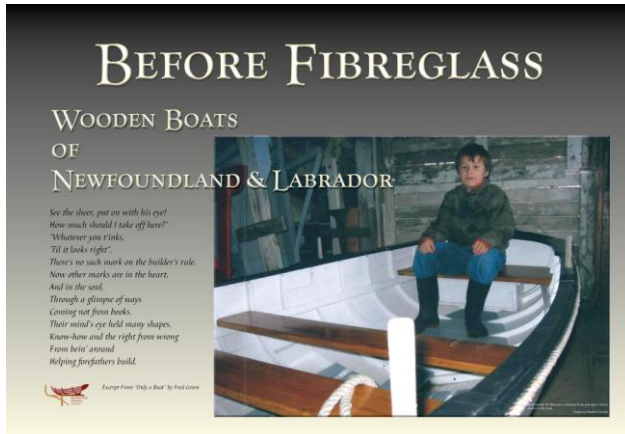
The conference was a huge success. The WBMNL expresses its sincere thanks to our partners – Town of Trinity, Trinity Historical Society and the Rising Tide Theatre. Special thanks to Jim Miller and his committee for a job well done!

The 5th Annual Wooden Boat Conference will be held in Winterton on September 7th & 8th, 2012. The highlight of the conference will be the arrival of the *Leah Caroline* – Henry Vokey’s 44’ schooner!



Leah Caroline – Photo courtesy of Kevin Toope

Special Events Provincial Travelling Exhibit Unveiling



The Museum's Provincial Travelling Exhibit "*Before Fibreglass – The Wooden Boats of Newfoundland and Labrador*" was unveiled at the Great Hall, Queens College Memorial University. A reception on the evening of April 17th was held to showcase the exhibit to Federal and Provincial Government Agencies, Museum & Heritage organizations, potential Museum sponsors and other invited

guests. The exhibit was open for general public viewing from April 18th – 22nd.

The objectives of the unveiling were:

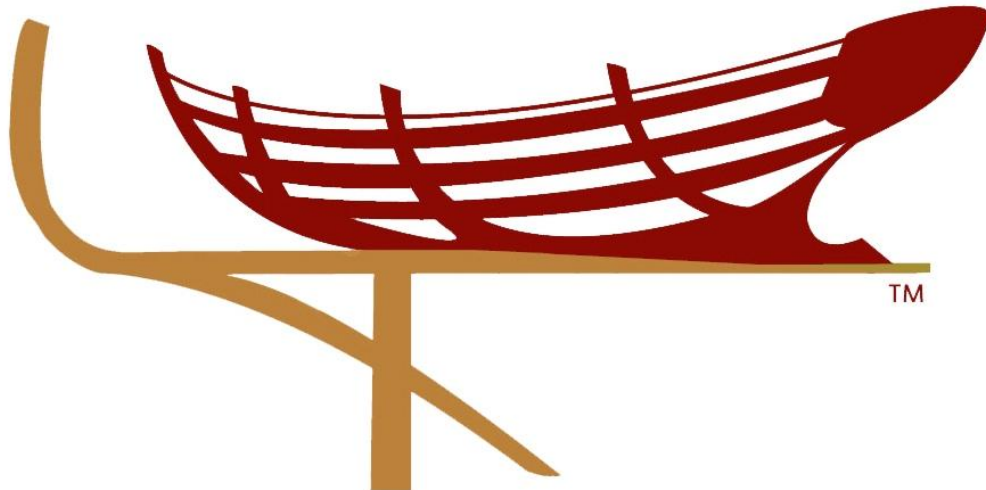
1. Increase education and awareness of our built and intangible wooden boat heritage
2. Attract future hosts and encourage expansion of Exhibit venues in other regions of the province including Labrador
3. Attract Sponsorships for Exhibit travel and support
4. Increase awareness of the Wooden Boat Museum of NL
5. Increase visitation rates to Museum as a result of new interest and knowledge
6. Increase participation in Museum activities and programs

We would like to take this opportunity to thank our sponsors of the event:

- Memorial University, Archaeology Department
- Conach Consulting
- Technip
- TriNav Group of Companies
- Ocean Choice International
- Hindy's Home Hardware
- Stan Cook Kayak Adventures

2011 – 2012 Board of Directors
Wooden Boat Museum of Newfoundland and Labrador

Chair / President	Frank French
Vice Chair / Vice President	Chris Osmond
Treasurer	Wallace Pinhorn
Secretary	Beverley King
Directors	Jim Dempsey
	Melvin Green
	Cle Newhook
	Jennifer Sheppard
	Chris Sullivan
	Bruce Whitelaw (Past Chair)



Our Members

Wooden Boat Museum of Newfoundland and Labrador

Silver Members

Barrett, Hal	Clarke, Lionel & Murray, Debbie
Dempsey, Jim	Newhook, Cle
Finlay, Robert	Osmond, Chris & Kim
Flynn, Anthony	Patey, John
Goudie, Joe	Pinhorn, Wallace & Roseanne
Green, Melvin & Eileen	Simmons, John
Shirley Green	Templeton, Christina

Partner Organizations

Battle Harbour Historic Trust	Historic Sites of Newfoundland and Labrador
Cupids 400 Inc.	Rising Tide theatre
Cape Race Cultural Adventures	SUF No. 2 Lodge-Winterton
Fishers Loft Inn, Port Rexton	Twillingate Island Tourism Association
Heritage Foundation of Newfoundland and Labrador	Winterton Harbour Authority

Community Partners

Arnold's Cove	Mary's Harbour
Charlottetown	New-Wes Valley
Englee	Ramea
Fortune	Renews-Cappahayden
Glenwood	St. Anthony
Grand Bank	Terranceville
Hampton	Trinity
Hant's Harbour	Trouty Brook
Lushes Bight - Baumount	Winterton

Our Members

Wooden Boat Museum of Newfoundland and Labrador

Individual/Dual Members

Aldworth, Greg	Campbell, Joseph	Edge, Rory
Allan, Clifford	Canning, Jerome	Edwards, Jim
Allan, Wilfer	Carberry, Harold	Elliott, Neil
Andrews, Mervin	Cashin, Frank	Elliott, Sterling
Anne Marie Anonsen	Cass, Alan	Enguehard, Joseph
Anstey, Jim	Cass, Hilary	Fennimore, Ernest
Arcott, David	Chapple, Ross	Fitzpatrick, Con
Badcock, Gary	Clarke, David	Flynn, Dennis
Baird, Gavin	Clarke, Max	Flynn, Eugene
Baker, James	Coaker, Jim	Fowlow, Douglas
Barbour, Amanada	Coates, Glennys	Freake, Troy
Barnes, Clarence	Coates, Kevin	French, Frank
Barrington, Wayne	Cobb, Tony	Garland, Paul
Bartlett, Elese & Randy	Collett, Jonathan	Gates, Lonnie
Bashford, Gerald	Cooper, Howard	Gedge, Brian
Bates, Robert	Cooper, Leslie	Gooder, James
Belbin, Clarence	Cooper, Stephen	Goodyear, Jullian
Belbin, Maxine	Cornick, Rex	Goose, Bob
Benson, David	Costello, Dan	Green, Paul
Best, Bill	Courtney, John	Green, Richard & Jill
Biddle, Brent	Crocker, Dan	Gushue, Jennifer
Blackmore, Brenda	Crocker, Robert	Halliday, Robert
Blackmore, David	Cull, Wallace	Hardy, Keith
Blake, Robert	Daniel, Ann	Hardy, Tom
Blundon, Daniel	Daniel, Phillip	Harnum, Abe
Blundon, Paula	Davis, Bruce	Harnum, Peggy
Boileau, Renee	Dean, Paul	Hastings, John
Boyd, Kathleen	Dearing, Romana	Hauser, Ernie
Brook, Chris	Decker, Peter	Hawco, Derrick
Brown, Irene	Diamond, David	Hayes, Richard
Burrey, Derrick	Dollimont, Gladys & Roy	Hedd, Lee
Burton, Perry	Donnelly, Charles	Hegnauer, John
Button, Alexander & Elmera	Donnelly, Deborah	Hicks, Leon
Button, Florence	Dooley, Paul	Hill, Doug
Caines, Eugene	Doyle, Alan	Hiscock, Ed

Our Members

Wooden Boat Museum of Newfoundland and Labrador

Individual/Dual Members

Hiscock, Gord	Moss, Catherine	Ralph, Craig	Vokey, Henry
Hiscock, Joan	Moss, David	Reardon, Francis	Vokey, Joe
Hiscock, Mark	Muise, David	Reid, Charlie	Vokey, Keith
Hiscock, Mark & Valerie	Murray, Hilda	Reid, Rona	Vokey, Sharon
Hiscock, Molly	Myrden, Gary	Rhoads, Dean	Vokey, Wayne
Hiscock, Vernon	Noel, Anderson	Richards, David	Vyn, Ralph
Hookey, Chris	O'Bryne, Fergus	Rose, Claude	Walker, Ray
Hoskins, James	O'Keefe, Danny	Rumbolt, Alton	Way, Tim
Howell, John	Pardy, Eric	Rumbolt, Darron	Whitelaw, Bruce & Tywana
Howse, Alex	Pardy, George	Rumbolt, Jeff	Wick, Kent
Humby, Harvey	Parsons, Gerald & Maria	Saunders, Calvin	Williams, Danny
Hutchings, Robert	Patey, Phillip	Saunders, David	Wyse, Jim
Igloliorte, James	Payne, Jim	Sharpe, Joan	Young, Otto
Jackman, Don	Pearson, Rodger	Sheppard, Harry	Young, Rick
Jaeger, Linda & George	Penney, Ches	Sheppard, Jennifer	
Johnson, Ray	Penton, Aiden	Sheppard, Mark	
Jones, Andy	Perry, Benjamin & Julia	Sinyard, Harold	
Jones, Jim	Pickett, Ralph	Small, Sidney	
Kelly, Otto	Piercey, Kevin	Smith, Frederick	
Key, Randy	Piercey, Stephanie	Snow, Donald	
King, Beverley	Pinhorn, Allenby	Sooley, Carl	
Knowles, Jean	Pinhorn, Florence	Stacey, Kathi	
Lane, Frank	Pinhorn, James	Stuckless, Ted	
Lily, George	Pinhorn, Jeff	Sullivan, Andrew	
Lush, William	Pinhorn, Lisa	Sullivan, Blaine	
MacKenzie, Neil & Beth	Pinhorn, Matthew	Sullivan, Chris	
Manuel, Alfred	Pinhorn, Norman	Sullivan, Martin	
Marshall, Steve	Pinhorn, Paul	Tamason, Charles	
Marten, Brian	Pinhorn, Randy	Taylor, David	
McAleese, Kevin	Pinhorn, Wade	Trowbridge, Rolland	
Meade, Roy	Porter, Marily	Tucker, Grant	
Melay, Eugene	Powers, Marjorie	Tucker, Otto	
Mercer, Ken	Powers-Green, Stephanie	Veitch, Jerry	
Moffat, Dale	Pye, Lewis	Vokey, Glen	
Monohan, Garry	Pynn, Ernie	Vokey, Hailey	

**Our Corporate Sponsors &
Individual Donations**
Wooden Boat Museum of Newfoundland and Labrador

Gala 2011 – Corporate Sponsors

- C& W Industrial Fabrication
- Clarke's Real Estate
- Fred Constantine
- Green Seafoods
- Hindy's Home Hardware
- Husky Energy
- Ocean Choice International
- Oceanic Consulting Corporation
- P. Janes & Sons
- Technip
- TriNav Group of Companies

Gala 2011 - \$500+ Donation

- Battle Harbour Historic Trust
- Bill King
- Emma Butler Gallery
- Fortis Properties
- Glenn Mitchell
- Hauser Company Store

Donations 2011 – 2012 (>\$500.00)

- Marvin Barnes – Model Dorries
- John Warren – Beothuk Canoe Model
- Phil Warren – Scilly Cove Goat Painting
- Joshua Young – Model Dory
- Dept. of Tourism, Culture and Recreation
- TriNav Group of Companies
- Town of Winterton

2011 Audited Financial Statement
Wooden Boat Museum of Newfoundland and Labrador