

WOODEN BOAT MUSEUM OF NEWFOUNDLAND AND LABRADOR

Report of Activities 2012 - 2013



Wooden Boat Museum
of Newfoundland and Labrador



Message from Chairman of the Board Frank French

Another year is nearing an end, and as evidenced in this report, the Museum has had a very successful one.

Among the more significant accomplishments include very positive discussions on ways that we can partner with the Marine Institute. As a result, Mark Wareham has agreed to serve on the Board as the Institute representative; we look forward to exploring possibilities for collaboration. As well, we are taking part in exploratory discussions with the Department of Tourism and representatives from San Sebastian, Spain, regarding partnership possibilities related to reconstruction of the 16th Century Basque whaling ship *San Juan* which sank in Red Bay, Labrador. A representative from San Sebastian will be presenting at our Conference in September.

Over the past year we have organized a Make n' Break component to our Boats in the Harbour program and have had several well attended workshops on the repair and maintenance of these engines; we will also be offering a workshop session at our Conference in Glovertown in early September. Throughout this report you will read about other positive outcomes from the efforts of our staff, Board of Directors, members and volunteers.

There have been challenges as well, especially related to funding. As expected, we are required to stand on our own feet more and more as we mature as a Museum, and we have been successful in doing this; but in tough financial times, funding agencies are challenged with fewer resources to distribute among more and more requests. At time of writing we are still waiting for a conclusion to this years round of funding negotiations with ACOA and IBRD.

Last year I reported on an initiative with the Department of Education where our efforts would be a part of the curriculum for every student in Newfoundland and Labrador. Unfortunately budget cuts have shelved these efforts; however we will be exploring other ways to move forward with this project in the coming months.

In order to progress as a Museum we will always need new people with new energy and ideas to help direct the operation. If you feel you have something to offer, let us know and get involved on whatever scale suits you; I'm sure you will find the time you spend very rewarding.

We look forward to the coming year with a positive attitude and plans to work diligently toward the Museum's mandate. We will continue to develop and monitor our workshop programs for ways to encourage more participation and improve revenue; documentation efforts will proceed within budget allocations; fundraising and sponsorship are always necessary and ongoing activities; and, we will continue to source partnerships in areas of mutual benefit. While it is important to look forward we never forget to do so in light of our past accomplishments keeping in mind our motto "Look Aft and Learn".

Message from Treasurer of the Board Wallace Pinhorn

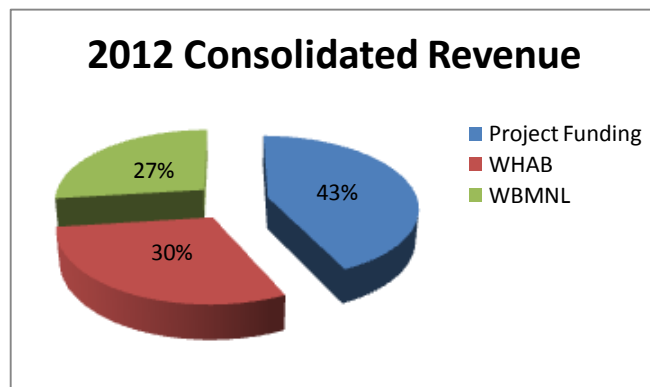
On behalf of the Board of Directors of the Wooden Boat Museum of Labrador Inc. (WBMNL), I am pleased to provide the financial report for the Fiscal Year 2012.

Revenues from Project contracts with ACOA and IBRD and from Museum activities and programs allowed WBMNL to unveil its *Before Fibreglass: Wooden Boats of NL* exhibit; feature in our Provincial Tourism advertisements; conduct boat building workshops at Winterton and Bay Roberts; market at Trade, Marketing and Heritage Shows; develop preliminary plans for an International Conference; complete, in partnership with Glovertown, its first online Boats and Builders documentation for its Wooden Boat Field Guide; and continue with its Annual Conference and Quarterly Newsletter. In addition, our partnership with the Town of Winterton and its Heritage Advisory Board (WHAB) allowed the operation of the WBMNL Museum at Winterton for the 2012 Tourist Season.

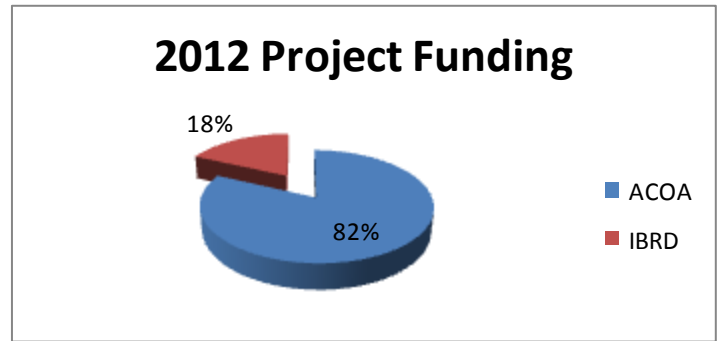
Revenue to support Museum activities flows from the WBMNL and the WHAB for its operation and development.

The charts below show categories of Revenue, Project Funding and Expense for the consolidated operation.

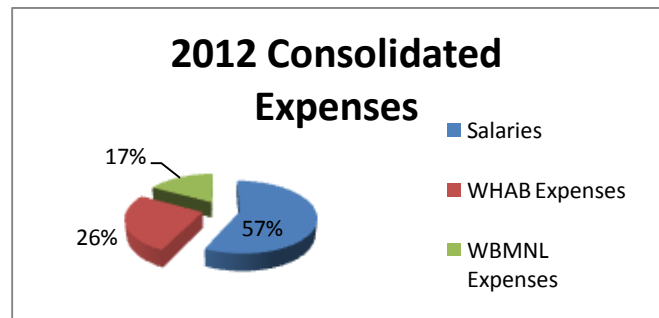
Consolidated Revenue for 2012 was \$217,000. Project Funding accounted for 43%, WHAB and WBMNL Revenue was 30% and 27% respectively.



Project Funding for 2012 was \$94,000. ACOA's Innovative Community Fund (ICF) provided 82%; IBRD's Regional/Sectoral Diversification Fund (RSDF) provided 18%.



Consolidated Expenses for 2012 were \$242,000. Salaries 57%, WHAB Expenses 26% and WBMNL Expenses 17%.



Project contracts with ACOA and IBRD expired in May 2013. New Project contracts for 2013 and 2014 are being negotiated. Cost shares are expected to be ACOA 40%, IBRD 40% and WBMNL 20%. The WBMNL Board and Museum Friends must focus on Revenue Development in order to meet our financial commitments under these contracts. These efforts will allow the Museum to continue developing and delivering on its Mission and Objectives.

Financial Statements for WBMNL are shown within this Annual Report.

The Museum in Winterton

Jennifer Finn, Museum Manager

The Winterton Heritage Advisory Board Liaison Committee was formed to co-ordinate the activities of the Winterton Heritage Advisory Board and the Wooden Boat Museum of Newfoundland and Labrador. Its objectives are planning for the Museum season and seeking the necessary funding to carry out these plans. This includes staffing, organizing exhibits, developing heritage programs and directing the operations of the Museum throughout the season.

Funding for the Museum operation is received from Department of Tourism's CEDP Operational Support, Canadian Museum Association Young Canada Work's Program, and Government of Canada's Canada Summer Jobs Program. In 2012 The Museum hired five workers through the Government of Canada's Job Creation Program. Funding for the Museum is supplemented by Museum admissions, merchandise sales, donations and fundraising events.

Volunteers play an important role in Museum programming. An Artist in Studio program began in 2011. This program was further expanded upon in 2012 by introducing an Artist in Studio program that ran every Saturday. Local artists, crafts people and entertainers provided tourists with demonstrations of their skills - a schedule of artists for 2013 can be found on our website.



Rhoda Hedd & Marie Evans demonstrate mat hooking



THROWING HOOP.....

Our Canada Day Open House and Family Fun Day is held each year. The theme for 2012 Family Fun Day was "The Fun We Had". Visitors were encouraged to participate in games that entertained young and old "back then". Family Day is held each year on July 1st and a Family Fun Day is held in August.

In 2012, The Museum moved away from guided tours and focused on daily programming which involved talks, demonstrations and a heritage walk. This has continued in 2013, with some changes to the schedule, to include some new talks and an extra net knitting demonstration.

Talks include:

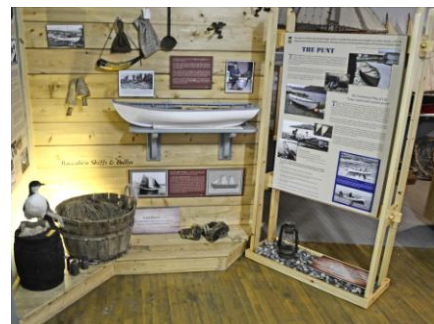
- Dorries and Dory men talk
- The Punt and Rodney
- The Beothuk and their Canoes
- Fishermen Folktales and Yarns

Demonstrations and tours include:

- Net knitting/Caulking
- Boat Building demonstrations
- The Heritage Walking Trail
- Full Tour of Museum available upon request



In March 2012 funding was obtained to conduct a Professional Needs Assessment. A grant from the Canadian Heritage – Museum Assistance Program was received in 2013 to construct an archive and make improvements to storage spaces and storage housing. The archive will be constructed in the lower half of the south wing extension and will house the necessary shelving and environmental controls that will allow the Museum to have a professional archive.



Exhibits – Museum in Winterton

Wooden Boat Documentation Committee

Crystal Braye, Folklorist



Janes House Museum
Photo courtesy of Town of
Glovertown

In our 2012 Documentation Program the WBMNL partnered with Janes House Museum Committee in Glovertown to collect information from local boat builders about how their boats are built and used. Folklorist Crystal Braye and Naval Architecture intern Mitchell Cooper collected photos, videos, audio interviews, and took measurements from a number of boats. From

this research, six new museum panels have been created and an archival collection of transcribed interviews, audio files, and photos can be found in both Winterton and Glovertown.

This information has also been added to the new “Boats & Builders” section of WBMNL’s website. The purpose of this section is to exhibit Newfoundland’s boat builders, their tools & techniques, boats, the materials they use, and to tell the story of these boats in everyday life. Through a series of interconnected webpages supplemented with audio clips, photos, videos, drawings, diagrams, and maps, web users can navigate the collection according to their interests.

Sam Feltham

Communities / Boatbuilders / Boats / Tools & Techniques / Materials / Fishing, Sealing & Birding

In a small fishing community where everyone built their own boats, learning how to build was part of growing up for a young boy. “You’d go from one stage to the other,” says Sam, “listen to what they were telling you and watching them work. That’s the way I got my training.”

Sam Feltham was born on **Deer Island** in Bonaville Bay on March 5, 1928. He built his first boat on his mother’s kitchen table at fourteen years old. The six foot punt floated, but rolled over immediately. Sam has been building boats, with a higher success rate, ever since.



Sam notes Noah Feltham as a particularly significant influence. Fisherman, carpenter, mechanic and self-taught doctor, Noah was a remarkable man on Deer Island. As a boy, Sam spent a lot of time in his shop while he worked. “He taught me everything I wanted to know,” says Sam, “I’d be there when I was only a boy, about 10 years old. He taught me how to file a saw, how to sharpen tools... He always found time and never hesitated if I went in and wanted to know how to do something. He would stop and show me how to do it. He was my teacher from the time I was a boy until I grew up. You can’t even tell from what knowledge he made.” Sam adds.



◀ 0:00 ▶

Sam built his first successful rodney in 1943 at the age of 15, the same year he went to work as a cook on a vessel in the Labrador fishery. He spent one season on a local delivery boat before going to work aboard the **Winifred Lee** in 1950. “We would meet the Nis in Hopeville and go as far north as Nainok,” providing passenger and freight service along the northern Labrador coast. Sam continued to build boats in the winter that were sold to the Newfoundland Government for use as Labrador posts. “It was a beautiful life. I loved the Labrador,” Sam says.



Learn more about **Sam Feltham's punt**

After moving to **Glovertown** in 1954 Sam earned his living as a carpenter, often travelling St. John’s and Gander for work. While no longer a necessity, Sam continued to build boats for recreation. “It’s a lovely hobby,” says Sam. Over the years, Sam has built over 100 boats including rodneys, punts, dories, motor boats, speed boats, and cabin cruisers.

▶



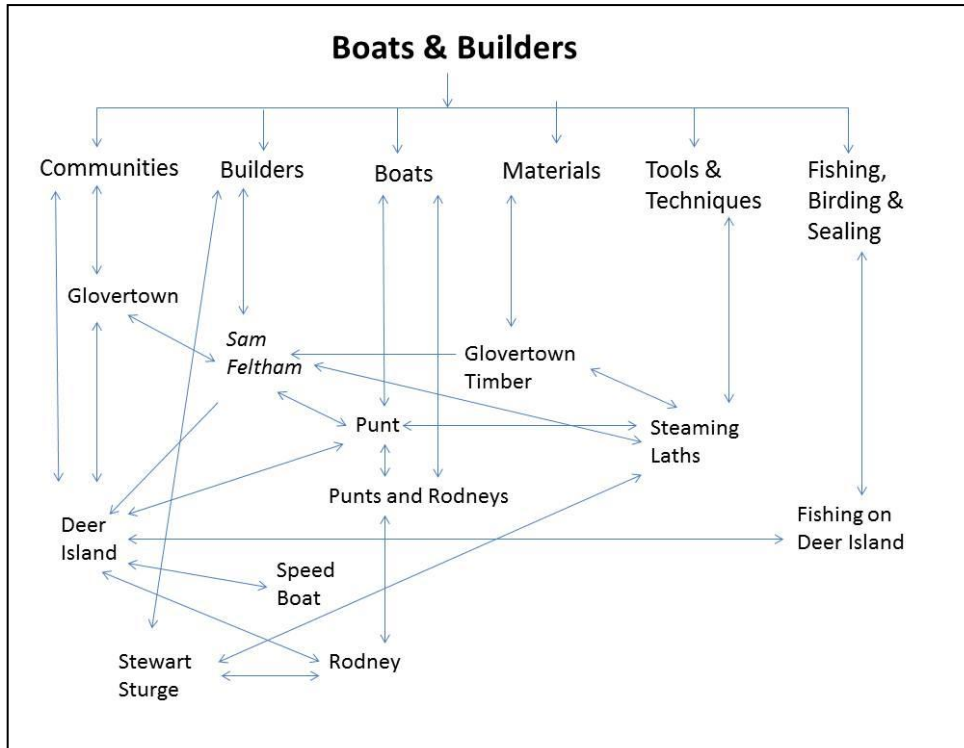
The **Winifred Lee**

“...without the ‘Winifred Lee,’ there would be no mail, no supplies other than dried goods brought themselves, no regular medical aid for the infirm as one has to acquire in the sailing year. There would be no word of other fishermen along the coast, no-nothing!”

- From **“The Roaming Schooner of the Labrador”** in **The Atlantic Guardian**, Vol. VII no. 7, July 1950.



The **Winifred Lee**, made by Sam Feltham.



This sample of webpage headings is intended to demonstrate the interconnectivity of pages and does not represent the entire collection or all possible links

In addition to the Glovertown content, “Boats & Builders” also includes information collected during fall 2012 in Pasadena and St. Jones Within as well as material from our 2011 Documentation Program. This collection of wooden boat heritage in our province will continue to grow as the documentation program moves ahead.



During our 2013 Documentation Program efforts have been focused on the Gander River Boat. Crystal Braye and Marine Institute intern Ryan Stacey travelled to Glenwood, Appleton, and Gander Bay where they spoke to boat builders and river guides and documented the lines of the Gander River Boat. Excerpts from these interviews, photos, videos, lines plans and constructions drawings will be added to “Boats & Builders” in the coming weeks. This material will also be used to create information pamphlets featuring the Gander River Boat and its

role on the river that will be available in Winterton and the Gander Bay region.

This season's Documentation Program has conducted additional work on the Southern Shore including Bay Bulls, Petty Harbour, and Calvert. Once this summer's data collection is complete this material will also be added to "Boats & Builders" on the WBMNL's website.



Left – Eugene Maloney's boat under construction – Bay Bulls
Top Right – Speed Boat – Donald Deagen – Bay Bulls
Bottom Right – MI student Ryan Stacey lifting lines from Gander River Boat

Wooden Boat Building Workshop Committee

Jim Dempsey, Chair

The objectives of the 2013 workshop program were to:

- Provide opportunities for novice boat builders to participate in actual construction of traditional Newfoundland small craft and to learn about their design and the techniques and skills required to build them;
- Develop standardized instructional programs that can be offered with minimum preparation in future workshops;
- Improve the infrastructure of the WBMNL boat shed in Winterton to support the workshop program; and
- Provide a living interpretation opportunity for museum visitors to observe the building of traditional Newfoundland small craft.

The museum conducted the following workshops in 2013:

16' Grand Banks Dory Construction – The Town of Bay Roberts commissioned the museum to build a dory that could be used recreationally by the Town. The Town hopes to have a fleet of dories so that it can hold races in the harbour during the annual Klondyke Days celebrations. The project was managed as a workshop with Jerome instructing town maintenance personnel during the construction. Board member Jim Dempsey coordinated the workshop and museum member Les Cooper provided much support during the week long project.



Small Boat Building Skills – A Saturday workshop based on the techniques and skills required for building a round-bottom punt was held every weekend from July 6 – August 24th. Presentation was based on the itinerary developed for the one-week punt workshop, but was flexible to accommodate the changes in participants and also the interfaces with the two one-week workshops.

16' Grand Banks Dory Construction – Based on the experience of the Bay Roberts

dory project, a second one-week dory workshop was held at the Museum boat shed between July 23-27th. In preparation for the workshop, Jerome constructed a strongback at the work station at the rear of the shed and created a full set of templates that will remain at the Museum. The dory was constructed with screw fasteners and without any adhesives so that it could be disassembled in preparation for future one day workshops.



Techniques and Skills for building a 14' 8" Fogo Island Punt – A week-long punt building workshop was held August 20-24th at the WBMNL boat building shed. The one week program provides participants with an overview of the design and use of a traditional Fogo Island punt and allows them to actively take part in the construction of the key components of the boat.



Make and Break Workshop – A one day workshop was held at the Museum in Winterton on July 27th and was focused on a Barnes Engine. The workshop was conducted by museum member Charlie Donnolly.



Children’s Introduction to Small Boat Building – Two afternoon workshops were held on August 15th and 28th to introduce children to traditional Newfoundland boat building. The workshops were conducted by boatbuilder Jerome Canning and Museum Manager, Jennifer Finn.

The session started with a discussion of the role of small boats in the Newfoundland fishery and their contribution to our coastal culture by the Museum Manager. The children were then given a tour of the boat building shed and introduced to the tools and materials used in building traditional small boats. Using examples of boats currently under construction, the children were shown the details of standard punt and dory construction. In describing these boats, there was a discussion of how a boat floats, why some boats are flat or round-bottom, and how designs evolved to meet the practical requirement of coast life. The session concluded with a simulation of the launching of their dory and singing the “Johnny Poker”



Standard packages have been developed for one-week workshops which present the key techniques for building a punt and for construction of a dory. These packages can now be marketed to interested groups throughout the Province.

St. John’s is a priority venue for future workshops as instructional personnel and tools are available locally. The challenge is to find a suitable venue that can be used for the existing and proposed workshops programs. The Museum is also seeking local groups or individuals off the Avalon Peninsula who can help us deliver workshops. Using the packages developed already, competent individuals can be mentored to offer sessions in different areas around the Province.

Sponsorship Committee

Cle Newhook, Chair

Finding dependable and sustaining corporate sponsors for the Museum's various activities is proving to be a tough task. While we've had some successes most everyone that we approach has the same reaction. "We are really proud of the Wooden Boat Museum and of the work that you do, but unfortunately we're on a tight budget ourselves, or we already support several good causes etc etc." One exception to this reaction is Davis Shipping and we're especially pleased to acknowledge their generous donation of \$5000 to the Museum. We also received an unsolicited donation from the FitzHenry Family Foundation in the amount of \$2,000.00.

Other corporations have assisted us by making in-kind donations. For example OCI has donated their Boardroom and teleconferencing facilities in St. John's for our regular Board meetings; the Town of Winterton provides us with office & boardroom facilities in Winterton; Hindy's Home Hardware provides us with a trailer to move our Provincial Exhibit; and TriNav continues to promote the Museum with free advertising through their Navigator Magazine. Other corporations have been able to help us by purchasing corporate tables at our Gala Fundraisers and by donating articles to our auctions.



WBMNL recognizes TriNav's contribution to the Museum at 5th Annual Wooden Boat Conference
Paul Pinhorn (left) – TriNav
Cle Newhook (right) - WBMNL

None of this means that we're giving up on seeking corporate funding. The new Board will be discussing how best to pitch our future needs to specific corporate sectors. Perhaps we need to link specific corporations to very specific initiatives within the Museum rather than asking them to consider open-ended donations to the Museum as an entity. We have learned some valuable things over the last couple of years. We know for example that the competition for corporate funding by deserving causes is fiercer than ever. This is due in part to the recent history of budgetary cutbacks by the Federal and Provincial governments, and we also know that many corporations have become much more focused in their giving. We have learned that many corporations have developed sophisticated strategies for what they fund and for how long and for many corporations long term funding of a few designated causes is favoured strategy.

Special Events

2nd “Only a Boat” Fundraising Gala



“A Huge Success”!! Our 2nd *Only a Boat* Fundraising Gala was held at the Holiday Inn, St. John’s on May 3, 2013 and the Museum saw a profit of \$30,000. Volunteers, donned in their rubber boots, circulated the room selling raffle tickets, encouraging bidding at the silent auction and ensuring that guests were enjoying their evening.

228 people filled the room – our corporate support increased from 11 tables in 2011 to 15 in 2013. Pan Fried Cod was the main course for the evening, followed by our “Dessert Auction”. Each of the 25 tables pooled together their money in hopes of being the highest bidder and receiving the right to be the 1st to choose from the 29 desserts. We wish to thank all those who donated desserts for this auction – there were no losers – each and every one of the desserts was delicious!

Five local artists provided us with original artwork for our live auction – Gerald Squires, George Horan, Clifford George, Florence Pinhorn and Winston Osmond. Sincere thanks to all for your donation to the Museum.

Our Live Auction was a huge hit with the group. With assistance from our Vannas - Miss Teen NL 2012 (Emily Bland), Miss NL 2012 (Chelsea Ash) and Miss Teen NL 2013 (Rayley Mackey) – our MC/Auctioneer, Wayne Bartlett did a fantastic job getting big dollars for our Live Auction items. The “TOP” item for the evening was a Kitchen Party for 25 people, hosted by WBMNL Director Melvin Green. Melvin performed several of his favorite tunes and was quite pleased to sell not one, but two Kitchen Parties. A Boat Building Workshop for 10 people, along with a lunch of Fish n’ Brewis, was also sold at the event. We look forward to hosting these events in Winterton.



We wish to express our sincere thanks to our Gala Committee, Wayne Bartlett, volunteers, donators of auction items and participants for your support. We look forward to our next Gala which will take place in 2014.



Wooden Boat Museum
of Newfoundland and Labrador

Special Thanks
to our **CORPORATE**
TABLE SPONSORS

Technip
take it further.

TRI NAV
Group of Companies

butland

conach consulting

Industrial Fabrication and Marine Equipment Ltd.

Cormorant Ltd.

Husky Energy

GREENSEAFOODS
CANADIAN SEAFOOD PRODUCERS

Dovre
GROUP

Hindy's Home
hardware
building centre

OCEAN CHOICE
INTERNATIONAL

QUINLAN
BRAND

Fred Constantine

CLARKE
REAL ESTATE LTD.
MAXINE BELBIN

BARRY GROUP

Special Events Conference 2012 – Winterton, NL

With the sound of “putt putt putt” echoing through Winterton Harbour, the Wooden Boat Museum of Newfoundland and Labrador kicked off its 5th Annual Wooden Boat Conference by launching two traditional wooden boats – a 16’ motorboat built by Master Boat Builder Henry Vokey and a 15’ rodney, the first boat built by WBMNL’s Chair Frank French. A crowd gathered on the wharf to watch these boats hit the water for the first time. Museum members Charlie Donnelly and Max Clarke, aboard their motorboats, joined with the others to enjoy a spin around the harbour.



Leah Caroline – Launched July 7, 2013
Picture by Kevin Toope

The conference theme focused on the Newfoundland Schooner and the Museum was thrilled when Henry Vokey offered to sail his newly launched wooden schooner – *Leah Caroline* – into Winterton. However, Mother Nature had other plans, and Henry had to settle on arriving by car – certainly not his choice of transportation!

Saturday's sessions gave those in attendance a history lesson on schooners with Cle Newhook's session on **"The Newhooks of Trinity – A Family of Master Shipbuilders"**; Alan Cass's **"The Schooner in the Conception Bay Trades"** and Ted Rowe's **"Ships & Shipwrights of Heart's Content."**



Our documentation team of Bruce Whitelaw, Crystal Braye and Mitchell Cooper brought us up to date on their documentation efforts in Glovertown during the summer of 2012. A video highlighting the technical documentation of the *Leah Caroline* was viewed as well.



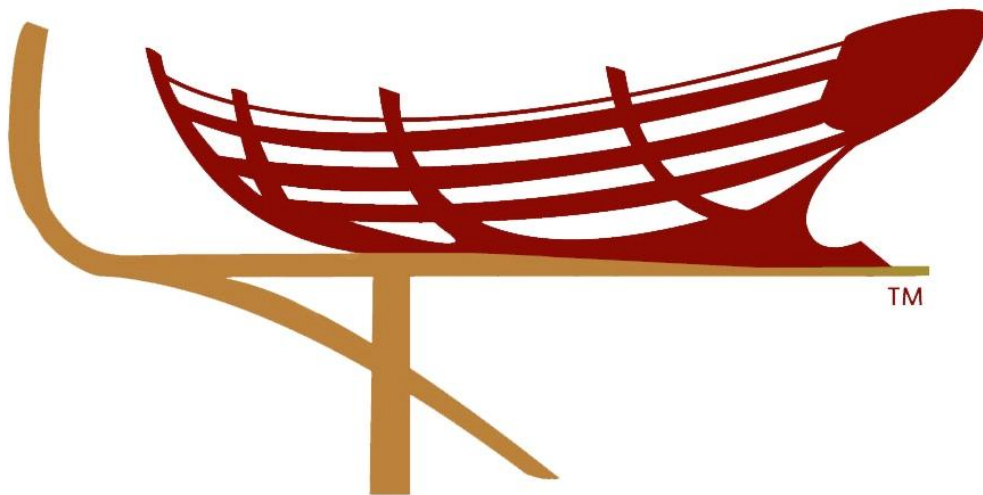
The Conference concluded with a home cooked Turkey supper on Saturday evening and the Kitchen Party – we were delighted to have new entertainers added to the lineup this year!

The 6th Annual Conference will take place in Glovertown on September 13 – 14th, 2013.

2012 – 2013 Board of Directors

Wooden Boat Museum of Newfoundland and Labrador

Chair / President	Frank French
Vice Chair / Vice President	Chris Osmond
Treasurer	Wallace Pinhorn
Secretary	Beverley King
Directors	Jim Dempsey
	Melvin Green
	Cle Newhook
	Jennifer Sheppard
	Heather Wareham
	Jim Wellman
	Bruce Whitelaw (Past Chair)



Our Members

Benefactors

Barrett, Hal	St. John's	NL
Dempsey, Jim	St. John's	NL
Duffett, Stephen	St. John's	NL
Finlay, Robert	St. John's	NL
Flynn, Anthony	CBS	NL
Goudie, Joe	Goose Bay	NL
Green, Melvin & Eileen	Winterton	NL
Green, Richard & Jill	St. John's	NL
Green, Shirley	Winterton	NL
Clarke, Lionel & Murray, Debbie	St. John's	NL
Newhook, Cle	St. John's	NL
Osmond, Chris & Kim	Durrell	NL
Patey, John	Colinett	NL
Pinhorn, Wallace & Roseanne	Winterton	NL
Sheppard, Mark & Jennifer	Winterton	NL
Simmons, John	Calgary	AB
Templeton, Christina	St. John's	NL

Our Members

Partner Organizations

Cupids 400 Inc.
Heritage Foundation of Newfoundland and Labrador
Twillingate Island Tourism Association
Winterton Harbour Authority
Fishers Loft Inn
Cape Race Cultural Adventures
SUF #2 Lodge – Winterton
Battle Harbour Historic Trust
Rising Tide Theatre
Ocean Quest Adventures

Our Members

Community Partners

Arnold's Cove
Bonavista
Charlottetown
Come by Chance
Conception Harbour
Englee
Fortune
Glenwood
Glovertown
Grand Bank
Hampton
Hant's Harbour
Lushes Bight – Beaumont
Mary's Harbour
Trinity Bay North
New-Wes Valley
Old Perlican
Ramea
Renews – Cappahayden
St. Anthony
Terranceville
Torbay
Portugal Cove – St. Phillips
Trinity
Trouty Brook
Twllingate
Whiteway
Winterton

Our Members

Family / Individual Members

Abbott, Sandy	Brown, Irene	Cull, Vallance
Aldworth, Greg	Burton, Perry	Daniel, Ann
Allen, Clifford	Butland, Marilyn	Daniel, Philip
Allen, Wilbur	Button, Alexander & Elmera	Davis, Bruce
Andrews, Mervin	Button, Florence	Dawson, Patrick
Anonsen, Ann-Marie	Burry, Derrick	Dean, Paul
Anstey, Jim	Caines, Eugene	Dearing, Ramona
Arcott, David	Campbell, Joseph	Decker, Peter
Badcock, Gary	Canning, Jerome	Diamond, David
Baird, Gavin	Carberry, Harold	Dollimont, Gladys & Roy
Baker, James	Cashin, Frank	Dooley, Paul
Barbour, Amanda	Cass, Alan	Donnelly, Charles & Deborah
Barnes, Clarence	Cass, Hilary	Downey, James
Barrington, Wayne	Chapple, Ross & Chartock, Lea	Doyle, Alan
Bartlett, Eleese & Randy	Clarke, David	Duffett, Stephen
Bates, Robert	Clarke, Max	Dwyer, William
Batland, Mevlyn	Coaker, Jim	Edge, Rory
Belbin, Clarence	Coates, Glennys	Edwards, Jim
Belbin, Maxine	Coates, Kevin	Elliott, Neil
Benson, David	Cobb, Tony	Elliott, Sterling
Best, Bill	Collett, Jonathan	Enguehard, Joseph
Biddle, Brent	Cooper, Howard	Feltham, Kirk
Blackmore, Brenda	Cooper, Leslie	Fennimore, Ernest
Blackmore, David	Cooper, Stephen	Fitzpatrick, Con
Blake, Robert	Cornick, Rex	Flynn Dennis
Blundon, Daniel	Costello, Dan	Flynn, Eugene
Boileau, Renee	Courtney, John	Fowlow, Doug
Boyd, Kathleen	Crocker, Dan	French, Frank
Brooks, Chris	Crocker, Robert	Freake, Troy

Family / Individual Members (con't)

Garland, Paul	Hoskins, James	Moss, Catherine
Gates, Lonnie	Howse, Alex	Moss, David
Gedge, Brian	Hughes, Christopher	Moyer, Jay
Geiger, Michael	Humby, Harvey	Muise, David
George, Paul	Hutchings, Robert	Murphy, Dave
Gibbons, Cindy / Jones, Jim	Igloliorte, James	Murray, Hilda
Goodyear, Julian	Jackman, Don	Myrden, Gary
Gooder, James	Jaeger, George & Linda	Noel, Anderson
Gosse, Bob	Jarvis, Dale	O'Brien, Joseph
Green, Mary	Johnson, Ray	O'Byrne, Fergus
Green, Paul	Jones, Andy	O'Keefe, Danny
Finn, Jennifer	Joy, John	Pardy, Eric
Halliday, Robert	Kelly, Otto	Pardy, George
Hardy, Keith	Key, Randy	Parsons, Gerald & Maria
Hardy, Tom	King, Beverley	Patey, Phillip
Harnum, Abe & Peggy	King, Chris	Payne, Jim
Harte, Darcy	Knowles, Jean	Pearson, Rodger
Hauser, Ernie	Lane, Francis	Penney, Ches
Head, Brian	Lily, George	Penton, Aiden
Hawco, Derrick	Loveys, Anthony	Perry, Benjamin & Julia
Hayes, Richard	Lush, William	Pickett, Ralph
Hedd, Lee	Mackenzie, Neil & Mary Beth	Piercey, Kevin & Stephanie
Hegnauer, John	Marshall, Steve	Pinhorn, Allenby & Florence
Hicks, Leon	Marten, Brian	Maud
Hill, Doug	Markwick, Eileen	Pinhorn, James
Hiscock, Ed & Molly	Melay, Eugene	Pinhorn, Jeff
Hiscock, Gordon & Joan	Manuel, Alfred	Pinhorn, Lisa
Hiscock, Mark & Valerie	McAleese, Kevin	Pinhorn, Matthew
Hiscock, Mark	Meade, Roy	Pinhorn, Norman
Hiscock, Vernon	Mercer, Ken	Pinhorn, Paul
Holwell, John	Moffatt, Dale	Pinhorn, Randy
Hookey, Chris	Monaghan, Garry	Pinhorn, Wade
		Pittman, Karole

Family / Individual Members (con't)

Porter, Marily	Sharpe, Joan	Tucker, Otto
Powers, Marjorie	Sheppard, Harry	Veitch, Jerry
Powers-Green, Stephanie	Sheppard, Peter	Vokey, Glen
Price, Kevin & Johnson, Janet	Sinyard, Harold	Vokey, Hailey
Prosciak, Mark	Small, Sidney	Vokey, Henry
Pye, Lewis	Smith, Fredrick	Vokey, Joe
Pynn, Ernie	Snelgrove, Ken & Lynette	Vokey, Keith
Pynn, Ian	Snow, Donald	Vokey, Wayne
Ralph, Craig	Sooley, Carl	Vyn, Ralph
Reardon, Francis	Stacey, Kathi	Walker, Ray
Reid, Charlie & Rona	Stanley, Rick	Wareham, Heather
Reid, Karl	Stern, Edward	Warren, Otto
Rhoads, Dean	Stuckless, Ted	Way, Tim
Richards, David	Sullivan, Andrew	Wellman, Jim
Rose, Claude	Sullivan, Blain	White, Dave
Rumbolt, Alton	Sullivan, Chris	Whitelaw, Bruce
Rumbolt, Darron	Sullivan, Martin	Wick, Kent
Rumbolt, Jeff	Tamason, Charles	Williams, Danny
Ryan, Bruce & Pearcey, Gail	Taylor, David	Wyse, Jim
Saunders, Calvin	Trowbridge, Rolland	Young, Otto
Saunders, David	Tucker, Grant	Young, Rick

Our Corporate Sponsors & Individual Donations

Wooden Boat Museum of Newfoundland and Labrador

Patrons – 2012-2013

GOLD Davis Shipping Ltd.

BRONZE Fitzhenry Family Foundation

Exhibit Unveiling Sponsors

Memorial University of NL – Archeology Department

Technip

Ocean Choice International

Conach Consulting

TriNav Group of Companies

Hindy's Home Hardware

Stan Cook Sea Kayak Adventures

Our Gala Supporters

Wooden Boat Museum of Newfoundland and Labrador

Gala 2013 – Corporate Table Sponsors

Barry Group

C&W Welding

Clarke's Real Estate

Conach Consulting

Cormorant Ltd.

Dovre Canada

Fred Constantine

Green Seafoods

Hindy's Home Hardware

Husky Energy

Butland Communications

Ocean Choice International

Quinlan Brothers

Technip Canada

TriNav Group of Companies

Gala 2013 - \$500+ Donation

Porter Airlines

Ocean Quest Adventures

Randy Key (Duke of Topsail)

Marine Atlantic

George Horan

Gerald Squires

Florence Pinhorn

Clifford George

Ted Stuckless

Winston Osmond

Glenn Mitchell

Marc Cooper Law Firm

Maersk Supply Services

2012 Financial Statement

Wooden Boat Museum of Newfoundland and Labrador

Wooden Boat Museum of Newfoundland and Labrador		
Statement of Financial Position		
March 31, 2013		
	2013	2012
Assets		
Current		
Cash	\$ 22,565	\$ 50,259
Accounts receivable	23,371	3,813
Prepaid expenses	3,036	2,396
Inventory	9,521	1,644
	58,493	58,112
Incorporation costs	85	85
Property, plant and equipment (Note 2)	74,982	74,982
	\$ 133,560	\$ 133,179
Liabilities		
Current		
Accounts payable and accrued liabilities	\$ 6,246	\$ 2,351
Deferred revenue	-	19,989
	6,246	22,340
Net Assets		
Investment in property, plant and equipment	74,982	74,982
Net assets	52,332	35,857
	127,314	110,839
	\$ 133,560	\$ 133,179

Approved on Behalf of the Board:

_____, Member

_____, Member

Wooden Boat Museum of Newfoundland and Labrador
Statement of Operations

For the Year Ended March 31, 2013

	2013	2012
Receipts		
Grants - Federal	\$ 96,303	\$ 29,475
Grants - Provincial	34,679	12,400
Grants - Other	26,269	-
Gala	8,200	24,560
Conference fees	6,918	7,048
Donations	13,225	5,136
Membership fees	5,473	2,992
Sales of merchandise	5,216	426
Workshop fees	2,160	5,005
Other revenue	1,263	1,851
	199,706	88,893
Disbursements		
Project expenses (Note 3)	166,433	58,677
Cost of merchandise sold	5,445	449
Catering	4,095	12,041
Professional fees	1,917	2,118
Gala	1,216	4,886
Interest and bank charges	1,077	1,810
Insurance	1,050	532
Miscellaneous	617	-
Production costs	500	-
Honorariums	396	823
Office supplies	363	1,063
Travel and entertainment	122	156
	183,231	82,555
Excess of receipts over disbursements	\$ 16,475	\$ 6,338