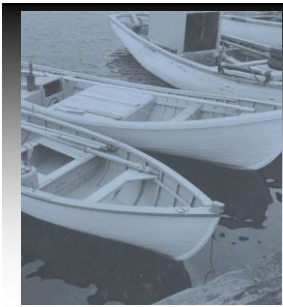


WOODEN BOAT MUSEUM OF NEWFOUNDLAND AND LABRADOR

Report of Activities 2013 - 2014



Wooden Boat Museum
of Newfoundland and Labrador



Message from Chairman of the Board Frank French

I am proud to once again have the privilege of introducing the annual Report of Activities for the Wooden Boat Museum of Newfoundland and Labrador. As you read through the various committee reports, it is evident that the Organization has had another very successful year.

Partnerships with other organizations and businesses have proven to be an important part of our success and no doubt will continue to be so as we move forward. While relying more and more on our own revenue generation activities, we were successful in concluding a funding arrangement with ACOA and IBRD; these funding arrangements have been there since day one and are critical in our continuing project work in various areas of the Province.

Revenue generating partnerships with Twillingate Island Tourism Association for the lease of our exhibit “*Before Fibreglass – The Wooden Boats of Newfoundland and Labrador*” at Long Point Lighthouse, and another arrangement with the Trinity Historical Society for establishment of an exhibit, as well as a pilot workshop program, are proving to be great investments for all concerned.

Another arrangement with True North Springs has given us the use of a 20 foot enclosed trailer to transport various items around the Province as we continue to reach out to fulfill our provincial mandate.



None of our accomplishments would be possible without the dedication and hard work of our Board of Directors, volunteers and staff; along with our members and corporate support. The coming year will no doubt have its challenges; as always, revenue generation will be a priority as well as continued efforts to fine tune present programs along with developing others. We are very excited about the planning efforts toward an international conference next year in Trinity, our ongoing marketing work with PhiasCo, our documentation and workshop programs, and the list can go on and on.

Please take some time to review the information outlined in this document to help you appreciate the successes of our Organization as we reflect on our motto “Look Aft and Learn”.

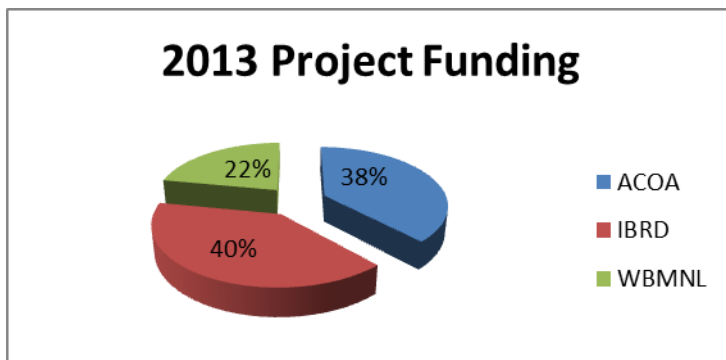
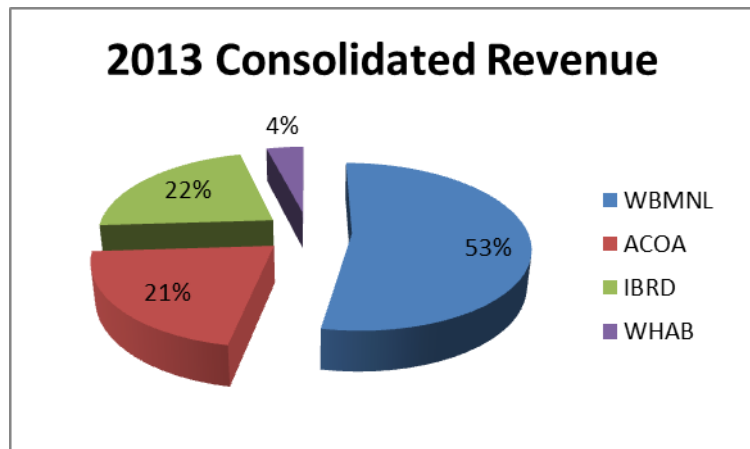
Message from Treasurer of the Board Wallace Pinhorn

On behalf of the Board of Directors of the Wooden Boat Museum of Labrador Inc. (WBMNL), I am pleased to provide the financial report for the Fiscal Year 2013.

Revenues from Project contracts with ACOA and IBRD and from Museum activities and programs allowed WBMNL to: develop partnerships and exhibit displays at Twillingate and Trinity; conduct boat building workshops at Winterton; market at Trade, Marketing and Heritage Shows; develop preliminary plans and funding applications for an International Conference in 2015; continue Boats and Builders documentation for its Wooden Boat Field Guide; and continue with its Annual Conference and Quarterly Newsletter. In addition, our partnership with the Town of Winterton and its Heritage Advisory Board (WHAB) allowed the operation of the WBMNL Museum at Winterton for the 2013 Tourist Season.

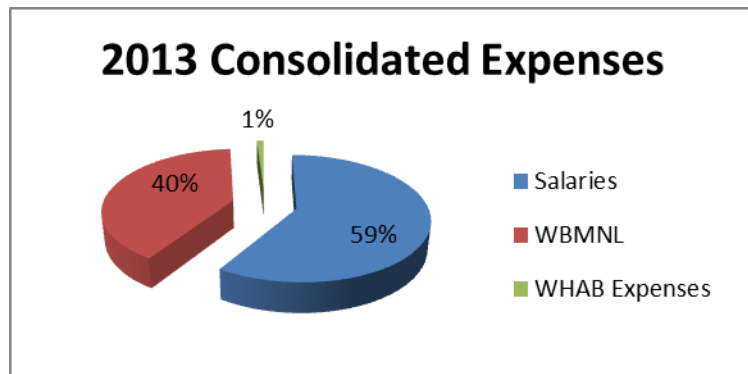
Revenue to support Museum activities flows from the WBMNL and the WHAB for its operation and development.

Consolidated Revenue for 2013 was \$266,000. WBMNL accounted for 53%, ACOA Funding 21%, IBRD Funding 22% and WHAB 4%.



Project Funding for 2013 was \$144,000. ACOA's Innovative Community Fund (ICF) provided 38%; IBRD's Regional/Sectorial Diversification Fund (RSDF) provided 40%; WBMNL provided 22%.

Consolidated Expenses for 2013 were \$253,000. Salaries 59%, WBMNL and WHAB Expenses were 40% and 1% respectively.



Project contracts with ACOA and IBRD will expire on March, 2015. Current project cost shares are approximately ACOA 40%, IBRD 40% and WBMNL 20%. New Project contracts for beyond March 2015 are being negotiated. Contracts for New Projects require WBMNL to contribute a higher cost share yet to be determined. The WBMNL Board and Museum Friends must focus on Revenue Development in order to meet our financial commitments under project contracts. These efforts will allow the Museum to continue developing and delivering on its Mission and Objectives.

Audited Statements for WBMNL are shown within this Annual Report.

The Museum in Winterton

Funding for the operation of the Museum in Winterton is received from Department of Tourism's CEDP Operational Support and supplemented by Museum admission fees, merchandise sales and donations. Our 2013 staff included a Museum Manager; Curator - through SECPAP (Small Enterprise Co-operative Placement Assistance Program) funding; four post-secondary students - a Museum Programming Assistant, a Chief Interpreter, an Interpreter and Naval Architect Student, all funded through the Young Canada Works Program; and four secondary students as Interpreters and Tour Guides through Canada Summer Jobs.

We opened our doors to visitors on June 24th. We hosted visitors from all parts of the world, and upon closing on September 1st, our final visitor count was 1523. We were open for an 11 week period with visitation averaging 138 per week.

To kick off the open season we held our 5th Annual July 1st Open House which saw more than 60 visitors to our Museum. Our 4th Annual Family Day was held on August 18th and was again a success. We had 66 guests during the afternoon who participated in this year's theme "*Pirate day*". Families enjoyed games, face painting, music, and themed snacks.

Nine artists participated in our Artist in Studio program in 2013, demonstrating a range of arts including; painting, music, rug hooking, wood carving and pillow top making. We received positive feedback from visitors who expressed that they enjoyed the opportunity to interact with and learn from our visiting artists. We wish to express our sincere thanks to our volunteers who participated in this program.



Florence Pinhorn



Reg Powers & Melvin Green



Nicole Penney



Marie Evans & Rhoda Hedd

The Museum also continued with our talks and demonstrations as well as providing guided tours to visitors upon request. Some of the featured talks were “*The Punt and Rodney talk*”, “*Dory Lore*” and “*The Beothuck and their Unique Canoe*”. Demonstrations included net knitting, caulking with oakum and boat building demonstration in our shed. Visitors were also offered a guided tour of Winterton’s scenic heritage walk.

A grant was received from Canadian Heritage through their Museum Assistance Program. The main purpose of the project was to improve storage areas and organize our archival materials that were scattered throughout the Museum. The large room in the south side extension was divided by adding a wall and closing off the doors in the rear. Electrical work was completed so the room would have its own thermostats and heaters which would allow us to control the temperature and protect our collection.

Archival shelving, media cabinets and archival filing cabinets were purchased and installed. Due to the large volume of archival material, the project was not completed before the Museum closed in the fall. Work is continuing in 2014 and we hope to have the archives operational for the 2015 season.

The SUF No. 2 collection, donated to the Museum in 2012, will also be stored in our Museum Archive. Documents range in date from 1873 to 2009. These documents were digitized at the Museum and are stored on Memorial Universities Digital Archives. To view these files go to

<http://collections.mun.ca/cdm4/description.php?phpReturn=browse.php&cisoroot=SUF2>

Betty Ingram (Hiscock), of Florida, whose father was from Winterton, has spent years researching the genealogy of the Hiscock families and all Winterton family names. Betty donated some of her work, presented as booklets, as the work was ongoing. In 2013 Betty decided to donate her complete family research records to the Museum – all 120 lbs. The booklets, indexes and research results are available at the Museum Archives and also available through the Museum’s electronic files.



In August 2013 the Museum developed and offered two children’s boat building workshops. The workshops consisted of both classroom and hands on boat building. Through the workshops children were able to gain a better appreciation for our Province’s heritage while also strengthening their team work skills. The sessions were well attended and both children and parents expressed their satisfaction with the workshop. The Museum plans to improve upon and expand these workshops in 2014.

A Make and Break Information Session was held in June at the Museum. A Make and Break workshop, focusing on the Barnes Engine was held on July 27th. The Museum would like to thank Charlie Donnelly who volunteers his time and expertise to lead these workshops.

With the hard work and determination of our board, staff and volunteers, we have once again enjoyed a successful year. Our ongoing work allows us to celebrate and preserve our wooden boat history - while sharing our past with visitors from all over the world. With a drive and vision that continues to grow, we are striving for an even more successful season in 2014!



Wooden Boat Documentation Committee Crystal Braye, Folklorist

WMBLNL's 2013 Documentation Program focused on the Gander River Boat and our team travelled to Glenwood, Appleton & Gander Bay. Folklorist Crystal Braye and Naval Architecture intern Ryan Stacey collected photos, videos, and audio interviews with Gander River boat builders and river guides. Lines were lifted and construction details taken for Gander River Boats to be used in exhibits, pamphlets, and on our website.



Eugene Saunders



Basil Gillingham

From this research, six museum panels have been created and will be on display alongside our Gander River Boat at our Museum in Winterton. Builder profiles, the history of the Gander River Boat, and other information collected has been added to the Boats and Builders section of our website and pamphlets will be made available in the Gander Bay area. Audio interviews and select photos have also been added to Memorial's Digital Archive Initiative.

WBMNL has continued to develop the Boats and Builders section of the website to better suit the needs of this growing content. The design has been enhanced and navigation has been simplified to create a more appealing experience for the user. All content resulting

from the Documentation Program, including audio clips, photos, videos, drawings, diagrams, and maps, can now be viewed on our website under the Boats and Builders tab.

Our 2014 Documentation Program will be focused on Twillingate and Trinity. In addition to our Documentation Program, the Museum will partner with the Heritage Foundation of Newfoundland and Labrador to offer workshops that teach community members the process for lifting lines from boats and how to collect oral histories.

As part of WBMNL's partnership with the Trinity Historical Society, Crystal Braye and Bruce Whitelaw developed four new museum panels focused on historical boat building activities in Trinity. These panels were the first to be added to our Chapter 2 exhibit in Trinity, with more scheduled to be added for the 2015 season.

In September of 2014, WBMNL will partner with the Heritage Foundation of Newfoundland and Labrador to offer a week-long introduction to fieldwork focused on our maritime history. "Fishing for Folklore" will teach participants project planning, oral history collection, boat documentation, and other skills to get community members interested in the documentation of our wooden boat heritage.



Ryan Stacey – MI Student



Wooden Boat Building Workshop Committee

Jim Dempsey, Chair

The objectives of the 2013 workshop program were to:

- Provide opportunities for novice boat builders to participate in actual construction of traditional Newfoundland small craft and to learn about their design and the techniques and skills required to build them;
- Develop standardized instructional programs that can be offered with minimum preparation in future workshops;
- Improve the infrastructure of the WBMNL boat shed in Winterton to support the workshop program; and
- Provide a living interpretation opportunity for museum visitors to observe the building of traditional Newfoundland small craft.

The museum conducted the following workshops in 2013:

1. **16' Grand Banks Dory Construction** – The Town of Bay Roberts

commissioned the museum to build a dory that could be used recreationally by the Town. The Town hopes to have a fleet of dories so that it can hold races in the harbour during the annual Klondyke Days celebrations. The project was managed as a workshop with Jerome instructing town maintenance personnel during the construction. Board member Jim Dempsey coordinated the workshop and museum member Les Cooper provided much support during the week long project.



2. **Small Boat Building Skills** – A Saturday workshop based on the techniques and skills required for building a round-bottom punt was held every weekend from July 6 – August 24th. Presentation was based on the itinerary developed for the one-week punt workshop, but was flexible to accommodate the changes in participants and also the interfaces with the two one-week workshops.



3. **16' Grand Banks Dory Construction** – Based on the experience of the Bay Roberts dory project, a second one-week dory workshop was held at the Museum boat shed between July 23-27th. In preparation for the workshop, Jerome constructed a strongback at the work station at the rear of the shed and created a full set of templates that will remain at the Museum. The dory was constructed with screw fasteners and without any adhesives so that it could be disassembled in preparation for future one day workshops.



4. **Techniques and Skills for building a 14' 8" Fogo Island Punt** – A week-long punt building workshop was held August 20-24th at the WBMNL boat building shed. The one week program provides participants with an overview of the design and use of a traditional Fogo Island punt and allows them to actively take part in the construction of the key components of the boat.



5. **Make and Break Workshop** – A one day workshop was held at the Museum in Winterton on July 27th and was focused on a Barnes Engine. The workshop was conducted by museum member Charlie Donnelly.



6. **Children's Introduction to Small Boat Building** – Two afternoon workshops were held on August 15th and 28th to introduce children to traditional Newfoundland boat building. The workshops were conducted by Jerome Canning and Museum staff.





The session started with a discussion of the role of small boats in the Newfoundland fishery and their contribution to our coastal culture by the Museum staff. The children were then given a tour of the boat building shed and introduced to the tools and materials used in building traditional small boats. Using examples of boats currently under construction, the children were shown the details of standard punt and dory construction. The session concluded with a simulation of the launching of their dory and singing the “Johnny Poker”

Standard packages have been developed for one-week workshops which present the key techniques for building a punt and for construction of a dory. These packages can now be marketed to interested groups throughout the Province.

During the summer of 2014, the Museum will offer three levels of workshops, each level increasing in duration, material covered and skills developed.

Level 1 – Intended for the casual visitor to the museum who would like the opportunity to experience some of the satisfaction of traditional boat building as part of the overall museum visit to Winterton and Trinity.

Level 2 – Intended for the enthusiast who has some carpentry experience and would like to learn more about boat building but does not have the time to commit any more than one Saturday at a time. Topics covered will focus on a single aspect of small boat construction.

Level 3 – Intended for the enthusiast who is looking for an intense and comprehensive experience in learning the skills and techniques in traditional boat building. In the weeklong sessions, participants will receive a comprehensive review of all of the skills and techniques required for building a round-bottom Newfoundland punt or build a complete Grand Banks dory.

Plans are also underway to hold several Boats in the Harbour events for the summer of 2014.

St. John’s is a priority venue for future workshops as instructional personnel and tools are available locally. The challenge is to find a suitable venue that can be used for the existing and proposed workshops programs.

The Museum is seeking local groups or individuals off the Avalon Peninsula who can help us deliver workshops. Using the packages developed already, competent individuals can be mentored to offer sessions in different areas around the Province.

Communications Committee Cle Newhook, Chair

The Committee continues to provide assistance to Museum staff in the development and production of the Museum's ongoing public relations and promotional publications and in all aspects of media relations. This involves assistance in copy development; layout; editing and proofing services. The objective is to ensure that all of our communications materials are of the highest quality and make for easy and accurate reading.

Aside from this ongoing work the main preoccupation of the Committee over the last several months has been to work with staff and the Museum's consultant in a complete overhaul of the Museum's web site and ancillary online presence. Mark Jenkins of Newfound Web Solutions was selected for this crucial job and all aspects of the contract between his company and the Museum have now been completed to the satisfaction of all parties. The scope of work was wide-ranging and comprehensive. In summary Mark has developed a completely new web site on a reliable WordPress platform. The new site is attractive, user friendly and is easy to navigate. Much of the content that was on the old site was migrated to the new site with a good deal of editing and re-writing. New graphics and photos have been added to the site including a state-of-the-art photo gallery using contemporary technology. In addition to the new website Mark has also developed a mobile site that meets the needs of contemporary communications technologies and products. We believe that this project has greatly enhanced the credibility and online presence of the Museum and will be an important tool in future promotions of the Museum and in our communications with the outside world.

The Committee would like to acknowledge the leadership shown by Museum staff over the duration of this project. It has been both challenging and time-consuming. We acknowledge in particular the services provided by Crystal Braye who worked closely with everyone in ensuring the success of this project. The extra hours she put into this project went well beyond the terms of her employment with the Museum.



HR Committee

Heather Wareham, Chair

In 2013 the WBMNL Board of Directors saw the need for the establishment of a Human Resources Committee who would be responsible for the creation and implementation of a Human Resources Policy for the Museum.

Through the Fall of 2013, Cle Newhook, Wallace Pinhorn, Beverley King and myself used a template created by the Museum Association of Newfoundland and Labrador to draft a policy suitable for the needs of the staff of the WBMNL. The policy covers all aspects of human resources issues for those employed by the museum, from hiring, vacation and other types of leaves, salaries, etc. and will be of benefit to both the employees and the management of the museum. A draft was circulated prior to the Board meeting on 5 December 2013 where it was passed.

In May 2014, Jennifer Finn resigned from her position as Museum Manager to take a position with Revenue Canada. Thanks to Jennifer for all her work with the collections and programs at the Museum. We wish you all the best in your new position.



Following Jennifer's resignation a call was issued for position of Museum Manager and we were very fortunate to secure one of our former students, Jeremy Harnum, in the position. Jeremy has worked with the museum for the last six summers while he was on an off semester from his studies at Memorial University. He is very familiar with the exhibits at the Museum and with its every day operation and we are delighted to have him on board.

Glennys Coates has been hired as Assistant Manager, and 7 students have also been given summer placements to provide tours and assist with other on-going work at the Museum for the 2014 season

We are anticipating a very busy summer this year and are looking forward to the AGM in Petty Harbour.



Special Events

Conference 2013 – Glovertown, NL

The 6th Annual Wooden Boat Conference was held in Glovertown on September 13-14. The conference kicked off on Friday morning with a workshop on Make and Break



engines, hosted by Museum member Charlie Donnelly. The Boats in the Harbour event took place on Friday afternoon. The sound of “putt-putt-putt” as several motorboats made their way around the Glovertown harbour delighted those in attendance. Many in attendance took advantage of the opportunity to take a spin around the harbour in a traditional wooden motorboat. The event’s high point was the launch of a tiny wooden

flat bottomed rowboat – built by 13 year old Jonathan Collett of St. John’s.

Saturday’s sessions began with a presentation by Dave Saunders on the history of boat building in the Glovertown area – through his research for the presentation he discovered that 197 schooners had been built in his region. Many of these were built in Glovertown because it is located alongside some of the finest timber in the province. Crystal Braye, WBMNL’s folklorist, then



gave a presentation on the Museum’s documentation project that took place in Glovertown in 2012.



Jim Dempsey, Chair, Workshop Committee reported on our Boat Building Workshops that took place during the past year – both in Winterton and Bay Roberts. Boat Building demonstrations by Museum members were well received. Many thanks to our members Alf Manual (Twillingate), Eugene Saunders (Eastport), Alex Howse (Mount Pearl), Jerome Canning (St. John’s) and Chris Sullivan (Calvert).



The afternoon began with a presentation by Cindy Gibbons, Site Supervisor at Parks Canada in Red Bay, which focused on the discovery of the *San Juan* shipwreck and the research that was done by Parks Canada. Xabier Agote, President of the Museum of Albaola Basque Maritime Heritage Society, then captivated the audience with his presentation on plans to build an authentic replica of the Basques whaling ship

San Juan that sank nearly 450 years ago.

The conference concluded with a home cooked turkey dinner and Kitchen Party. We wish to thank the Janes House Museum Committee, Glovertown Lions Club and Kevin Blackmore & friends for all their help in making this conference such a success.



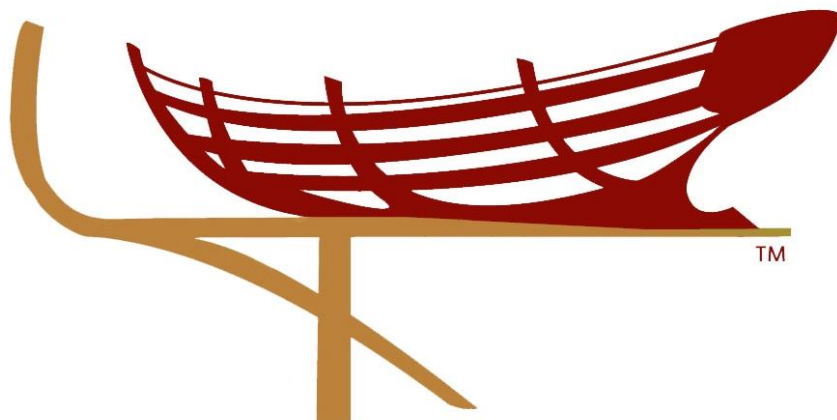
Crystal Braye – WBMNL’s Folklorist – was presented with the WBMNL Top Quality Award at the 6th Annual Wooden Boat Conference in Glovertown. This award was presented to Crystal for her outstanding work on the Glovertown Documentation Project. Her work can be found on our website www.woodenboatnl.com under the Boats and Builders tab.

7th Annual Wooden Boat Conference will take place in Petty Harbour – Maddox Cove on September 5th and 6th, 2014.

2013 – 2014 Board of Directors

Wooden Boat Museum of Newfoundland and Labrador

Chair / President	Frank French
Vice Chair / Vice President	Chris Osmond
Treasurer	Wallace Pinhorn
Secretary	Beverley King
Directors	Jim Dempsey
	Melvin Green
	Terry Hickey
	Cle Newhook
	Jennifer Sheppard
	Heather Wareham
	Mark Wareham
	Bruce Whitelaw (Past Chair)



Our Members

Honorary Life Members

Vokey, Henry	Trinity	NL
Cass, Hilary	Bristol's Hope	NL

Benefactors

Clarke, Lionel & Debra Murray	St. John's	NL
Dempsey, Jim & Catherine	Flatrock	NL
Duffett, Stephen	St. John's	NL
Finlay, Rob	St. John's	NL
Flynn, Anthony	CBS	NL
Green, Ernest	Mount Pearl	NL
Green, Melvin & Eileen	Winterton	NL
Green, Richard & Jill	Torbay	NL
Green, Shirley	Winterton, NL	NL
Igloliorte, James	St. John's	NL
Newhook, Cle	St. John's	NL
Osmond, Chris & Kim	Durrell	NL
Patey, John	Colinet	NL
Pinhorn, Wallace & Rosanne	Winterton	NL
Sheppard, Jennifer & Mark	Winterton	NL
Sheppard, Peter	Toronto	ON
Templeton, Christina	St. John's	NL

Our Members

Community Partners

Battle Harbour Historic Trust Inc.	St. John's	NL
Cape Race Culturalo Adventures Inc.	Rosseau	ON
Fisher's Loft Inn	Port Rexton	NL
Heritage Foundation of NL	St. John's	NL
Historic Sites Association of NL	St. John's	NL
Isles Wooden Boat Building Committee	Twillingate	NL
Mary's Harbour Town Council	Mary's Harbour	NL
Municipality of Trinity Bay North	Port Union	NL
Ocean Quest Adventures Inc.	CBS	NL
S.U.F. No. 2 Winterton	Winterton	NL
Town Council of Point of Bay	Point of Bay	NL
Town of Arnold's Cove	Arnold's Cove	NL
Town of Bonavista	Bonavista	NL
Town of Charlettetown	Charlettetown	NL
Town of Come by Chance	Come By Chance	NL
Town of Conception Harbour	Conception Harbour	NL
Town of Englee	Englee	NL
Town of Fortune	Fortune	NL
Town of Glenwood	Glenwood	NL
Town of Glovertown	Glovertown	NL
Town of Grand Bank	Grand Bank	NL

Town of Hampton	Hampton	NL
Town of Hant's Harbour	Hant's Harbour	NL
Town of Holyrood	Holyrood	NL
Town of Lushes Bight-Beaumont	Beaumont	NL
Town of New-Wes-Valley	Badger's Quay	NL
Town of Old Perlican	Old Perlican	NL
Town of Portugal Cove - St. Phillips	Portugal Cove - St. Phillips	NL
Town of Ramea	Ramea	NL
Town of Renews Cappahayden	Renews	NL
Town of St. Anthony	St. Anthony	NL
Town of Terrenceville	Terrenceville	NL
Town of Torbay	Torbay	NL
Town of Trinity	Trinity	NL
Town of Twillingate	Twillingate	NL
Town of Whiteway	Whiteway	NL
Town of Winterton	Winterton	NL
Twillingate Islands Tourism Association	Twillingate	NL
Winterton Harbour Authority	Winterton	NL
Town of Renews Cappahayden	Renews	NL

Our Members

Family

Bartlett, Randy & Elese	Winterton	NL
Belbin, Clarence & Maxine	New Chelesa	NL
Blackmore, David & Brenda	Newtown	NL
Boyd, Kathleen	Twillingate	NL
Brake, Robert	Mount Pearl	NL
Button, Alexander & Elmera	New Chelsea	NL
Carberry, Harold	Burgoyne's Cove	NL
Chapple, Ross & Chartock, Lea	Takoma Park	MD USA
Coates, Kevin & Glennys	Winterton	NI
Crummey, Brenda	Torbay	NL
Donnelly, Charles & Debra	Hamilton	ON
Durno, Lori	Pepperelle	MA
Gibbons, Cindy & Jones, Jim	Mary's Harbour	NL
Hauser, Ernie & Cheryl	St. Clements	ON
Hewett, Geoffrey & Karen	St. John's	NL
Hiscock, Ed & Molly	Winterton	NL
Hiscock, Michael	Paradise	NL
Hisock, Gordon & Joan	Winterton	NL
Marlwick, Eileen & Wright, Don	Toronto	ON
Marten, Brian	Baltimore	Co Cork
Pinhorn, Allenby & Florence	Winterton	NL
Price, Kevin & Johnson, Janet	Hillview	NL
Reid, Charlie & Rona	Winterton	NL
Ryan, Bruce & Piercey, Gail	St. John's	NL
Snelgrove, Ken & Lynette	St. John's	NL
Veitch, Jerry	Holyrood	NL
Wareham, Mark	Paradise	NL

Our Members

Individual

Abbott, Sandy	Princeton	Cohen, Tim	Portugal Cove - St. Phillips
Aldword, Greg	Parry Sound	Cooper, Howard	Winterton
Allan, Wilbur	Coley's Point	Cooper, Les	Bay Roberts
Allen, Clifford	Coley's Point	Cooper, Stephen	Ottawa
Anderson, Noel	Mount Pearl	Cornick, Rex	Moreton's Harbour
Andrews, Mervin	St. John's	Cosello, Dan	Conception Harbour
Anstey, Jim	St. John's	Crocker, Robert	Bedford
Arcott, David	St. John's	Crocker, Dan	Mount Pearl
Badcock, Gary	London	Cull, Vallance	Port Saunders
Baird, Gavin	St. John's	Daniel, Philip & Ann	Winterton
Barbour, Les	St. John's	Davis, Bruce	Westleyville
Barnes, Clarence	Cupids	Davis, Herb	Ottawa
Barrett, Hal	St. John's	Dawson, Patrick	Ottawa
Barrington, Wayne	St. John's	Dean, Paul	St. John's
Benson, David	Tors Cove	Dearing, Romanda	St. John's
Best, Bill	Chamberlains, CBS	Decker, Peter	Joe Batt's Arm
Biddle, Brent	Dundas	Diamond, David	Change Islands
Blake, Robert	Mount Pearl	Downey, James	Waterloo
Blundon, Daniel	Paradise	Doyle, Alan	St. John's
Blundon, Paula	Paradise	Dyer, William	Calgary
Boileau, Renne	St. John's	Edge, Rory	Trouty
Boone, Lloyd	Point of Bay	Edwards, Jim	Change Islands
Brooks, Chris	St. John's	Elliott, Neil	Paradise
Brown, Irene	St. John's	Elliott, Sterling	Twillingate
Burry, Derrick	Portugal Cove/St. Phillips	Enguehard, Joseph	St. John's
Butland, Marilyn	CBS	Feltham, Kirk	Ft. McMurray
Button, Florence	Carbonear	Fennimore, Ernest	Milton
Caines, Eugene	Port Saunders	Finn, Jennifer	Carbonear
Campbell, Joseph	Mary's Harbour	Fitzpatrick, Con	Marystown
Canning, Jerome	St. John's	Flynn, Eugene	Corner Brook
Cashin, Frank	Mount Pearl	Fowlow, Douglas	Kippens
Cass, Alan	Harbour Grace	French, Frank	Winterton
Clarke, David	Twillingate	Gedge, Brian	Ajax
Clarke, Max	Paradise	Gooder, James	Twillingate
Cobb, Tony	Ottawa	Goodyear, Jullian	Portugal Cove / St. Phillips

Individual Members (con't)

Gordon, Kevin	Glovertown	Knowles, Jean	St. John's
Gosse, Bill	St. John's	Lane, Frank	Tilting
Goudie, Joe	Goose Bay	Leggo, Jim	Corner Brook
Green, Mary	Centreville	Lily, George	St. John's
Green, Paul	Shoal Harbour	Lockyer, Ivan	Kingston
Hall, George	Madison	Loveys, Anthony	Torbay
Halliday, Robert	St. John's	Mackenzie, Neil & Mary Beth	Maple Bay
Hardy, Keith	Carbonear	Manuel, Alf	Twillingate
Hardy, Tom	Grand Bank	McAleese, Kevin	St. John's
Harnum, Jeremy	Winterton	Meade, Roy	St. Phillips
Hayes, Richard	Conception Bay South	Meadows, Stephen	Dufuniak Springs
Hedd, Brian	St. John's	Melay, Eugene	St. John's
Hedd, Lee	Portugal Cove	Moffatt, Dale	Conception Bay South
Hegnauer, John	Charleston	Monaghan, Garry	St. John's
Hickey, Terry	St. John's	Morgan, Darren	Torbay
Hill, Doug	Cupids	Moss, David	Princeton
Hiscock, Mark & Valerie	Wynnewood	Moyer, Jay	Niagara-on-the-Lake
Hiscock, Vernon	Pickering	Muise, David	Bellevue
Hogan, Christopher	St. John's	Murphy, Dave	Pasadena
Hookey, Chris	Gander	Murray, Hilda	St. John's
Hoskins, James	CBS	Myrden, Gary	Carbonear
Howse, Alex	Mount Pearl	O'Brien, Jerry	Mount Pearl
Hughes, Christopher	St. John's	O'Brien, Joseph	Bay Bulls
Humby, Harvey	Musgravetown	O'Bryne, Fergus	St. John's
Hutchings, Robert	St. John's	O'Keefe, Daniel	Harbour Grace
Ingham, Betty	Winter Springs	Pantella, Eugene	Wakaw
Jackman, Don	Hermitage	Pardy, Eric	Twillingate
Jaeger, Linda & George	Laneville	Pardy, George	St. John's
Johnson, Ray	Lower Island Cove	Parsons, Gerald & Maria	CBS
Jones, Andy	St. John's	Patey, Philip	Lewisporte
Joy, John	Goose Bay	Paul, Jesse	Glovertown
Kelly, Otto	CBS	Payne, Jim	St. John's
Key, Randy	Bahamas	Pearson, Rodger	Conception Harbour
King, Beverley	Winterton	Penney, Max	Manuels
King, Chris	Trinity	Penton, Aiden	Joe Batt's Arm

Individual Members (con't)

Perry, Benjamin & Julia	Badger's Quay	Stacey, Kathie	Carbonear
Picket, Ralph	Paradise	Stern, Edward	St. John's
Pinhorn, James	Scarborough	Strickland, Roger	Paradise
Pinhorn, Jeff	Chandler	Stuckless, Ted	Twillingate
Pinhorn, Lisa	St. John's	Sullivan, Chris	Calvert
Pinhorn, Matthew	St. John's	Tamason, Charles	Trinity
Pinhorn, Norman	Conception Bay South	Taylor, David	Washington
Pinhorn, Paul	Portugal Cove - St. Phillips	Trickett, Dave	Paradise
Pinhorn, Randy	Heart's Delight	Trowbridge, Rolland	St. John's
Pinhorn, Wade	Stephenville	Tucker, Grant	Winterton
Pittman, Karole	Rocky Harbour	Tucker, Otto	St. John's
Porter, Marily	St. John's	Vokey, Glen	Trinity
Powers, Marjorie	Winterton	Vokey, Joe	Trinity
Powers-Green, Stephanie	Winterton	Vokey, Keith	Spaniard's Bay
Prosciak, Mark	St. Phillips	Vokey, Wayne & Sharon	Trinity
Pye, Lewis	Mary's Harbour	Vyn, Ralph	Hamilton
Pynn, Ernie	Carbonear	Walker, Ray	Winterton
Pynn, Ian	St. Anthony	Wareham, Heather	St. John's
Ralph, Craig	Ottawa	Warren, Otto	Chapel Arm
Reardon, Francis	Corner Brook	Wellman, Jim	St. John's
Reid, Karl	CBS	White, Dave	Stillwater Lake
Rhoads, Dean	Twillingate	Whitelaw, Bruce	St. John's
Richards, John	St. John's	Wick, Kent	Moscow
Rumbolt, Alton	Mary's Harbour	Wyse, Jim	St. John's
Rumbolt, Darron	Mary's Harbour	Young, Otto	Twillingate
Saunders, Calvin	Gander	Young, Rick	St. John's
Saunders, David	Glovertown		
Sharpe, Joan	Twillingate		
Sheppard, Harry	St. John's		
Simmons, Jim	Calgary		
Sinyard, Harold	Goulds		
Small, Sidney	Gander		
Smith, Frederick	St. John's		
Sooley, Carl	St. John's		
STUDENT	Collett, Jonathan	St. John's	

Our Corporate Sponsors

Wooden Boat Museum of Newfoundland and Labrador

Patrons – 2013 - 2014

BRONZE

Fitzhenry Family Foundation



2013 Financial Statement

Wooden Boat Museum of Newfoundland and Labrador