



Wooden Boat Museum
of Newfoundland and Labrador

WOODEN BOAT MUSEUM OF NEWFOUNDLAND AND LABRADOR

Report of Activities 2015 - 2016



Message from President of the Board

Jim Dempsey

This is my first message to you as the President of the Wooden Boat Museum of Newfoundland and Labrador. I can tell you all that I feel very privileged to be in this position at this time in our development. The past year has been significant as I feel that we have gained the confidence, recognition, and direct support to be able to achieve our objectives. Where do I start? Let me try to give you some highlights which, I hope, will help you to share my pride in our accomplishments.

We were given a very positive start with the success of our 2015 Gala. Even with the Gala's important financial contribution, we still need government support to realize our ideas. By August, 2015, our ACOA and BTCRD funding was approved, giving us the confidence to be able to work through an agenda which would take us to at least the end of 2017. At the same time, we have solid support to host the *Trinity Seduction*, a celebration of our Wooden Boat Heritage. We considered these opportunities at a Board/Staff strategic planning session in October, 2015.

As a kick off to the 2015 summer season, we hosted a kitchen party at the SUF Hall in Winterton. The gathering of old friends over good food and music seemed appropriate, especially as we are working with the SUF Lodge and the Town of Winterton to find the right formula for WBMNL to manage the SUF Hall into the future.

During the summer season, we saw a consolidation of our efforts in the direction of our student interpretative staff and the maturing of the Workshop Program. In the spirit of partnership that is one of our fundamental objectives, we were able to continue commercial arrangements through the provision of exhibition materials to both the Trinity Heritage Society and TITA at the Long Point Lighthouse in Twillingate. Our current funding includes opportunities to create similar partnerships elsewhere in the province. Possible partnerships have now been extended outside of the province to the French islands of St. Pierre et Miquelon.

In September, we held our annual conference in Harbour Grace. A significant part of this event was the introduction of the *Heritage Skills Challenge*, an opportunity for participants to learn something about the traditional fishing industry and the boats that served it. The participation of those who attended the conference showed us what Intangible Cultural Heritage is all about.

Our staff is our greatest asset. In the past year, we have developed a Human Resources policy, hired additional staff, and invested in their contribution to the Museum. As an

employer, we are moving towards clear job descriptions, performance reviews, and strategic personal development.

Marketing has always been a weak part of our operation. We still need to work on product development but I can report that we have created public exposure at the *Kids Expo*, *Downhome Expo*, *North Atlantic Fish and Workboat Show*, and *Manufactured Right Here* trade shows. In an effort to make the Museum a tourism destination, we have created all-inclusive accommodation packages for our weekend and five-day boat building workshops in Winterton.

Through the creation of a Memorandum of Understanding with Parks Canada to support the interpretation of the historical small boats of the province, the future appears to be bright.

Thank you all for your interest and support. I am looking forward to the coming year.

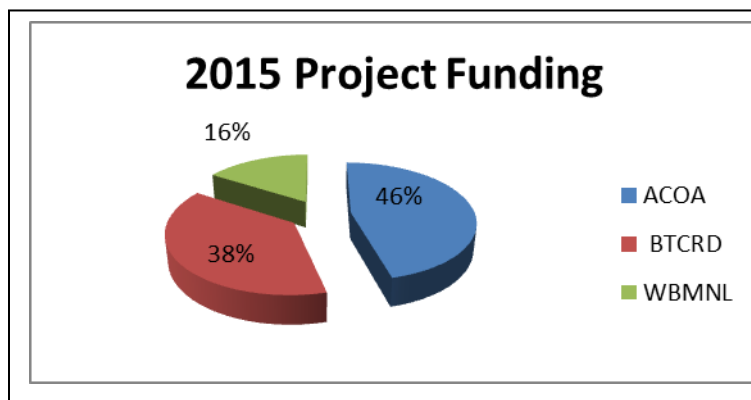
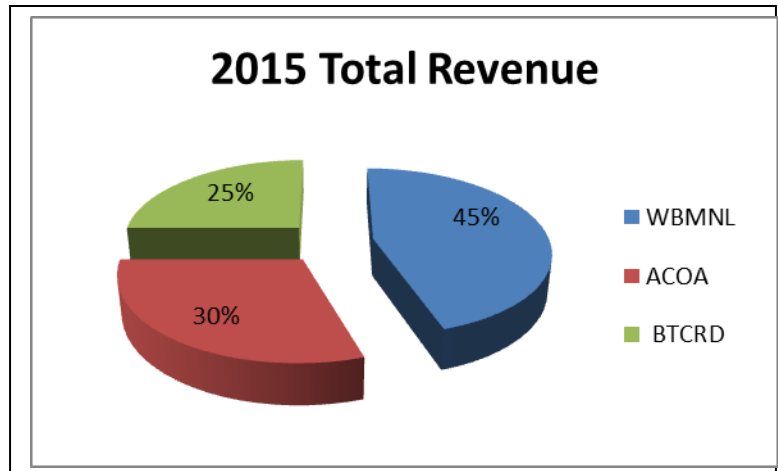
Message from Treasurer of the Board Wallace Pinhorn

On behalf of the Board of Directors of the Wooden Boat Museum of Labrador Inc. (WBMNL), I am pleased to provide the financial report for the Fiscal Year 2015.

Revenues from Project contracts with ACOA and BTCRD and from Museum activities and programs allowed WBMNL to: conduct boat building workshops at Winterton; continue with displays and partnerships with The Trinity Historical Society (THS) and The Twillingate Isles Tourism Association (TITA); market at Trade, Marketing and Heritage Shows; produce a new *Fishing Stages Exhibit* display at Winterton; develop plans for its *Wooden Boat Heritage* Capacity Building Conference at St. John's in October 2016; continue Boats and Builders field documentation and website; and continue with its Annual Conference and Quarterly Newsletter. In addition, in partnership with the Town of Winterton, the WBMNL Museum experienced a successful 2015 Tourist Season.

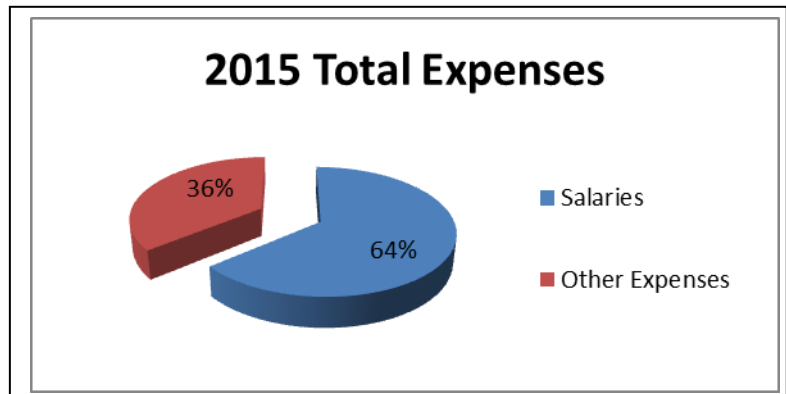
The charts below show categories of **Revenue, Project Funding and Expenses** for 2015.

Total Revenue for 2015 was \$334,000. WBMNL accounted for 45%, ACOA Funding 30% and BTCRD Funding 25%.



Project Funding for 2015 was \$215,000. ACOA's Innovative Community Fund (ICF) provided 46%; BTCRD's Regional/Sectorial Diversification Fund (RSDF) provided 38%; WBMNL provided 16%.

Total Expenses for 2015 were \$318,000. WBMNL Salaries were 64%, and Other Expenses 36% of the Total.



Project contracts with ACOA and BTCRD were completed in July 2015. New Project funding contracts were negotiated to December 2017. In addition, funding contracts were finalized for *Wooden Boat Heritage* Capacity Building Conference in October 2016. The WBMNL Board and Museum Friends must focus on Revenue Development in order to meet its share of eligible project costs. These efforts will allow the Museum to continue developing and delivering on its Mission and Objectives.

Audited Statements for WBMNL are shown within this Annual Report.

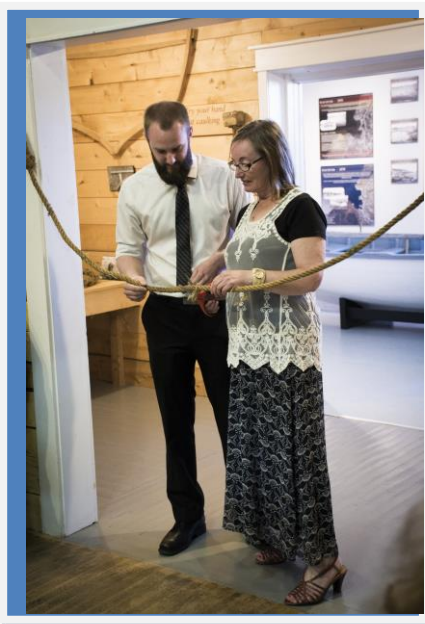
The Museum in Winterton

Jeremy Harnum, Manager

We officially opened the Museum on June 16, 2015. Total visitation for 2015 was 2203, with most visitors coming from Newfoundland and Ontario. The Museum was open for fourteen weeks with an average visitation of 157 per week.

Seven summer students were hired and provided guided tours for visitors. A Boat Building Assistant was hired under the YCW program to work with Jerome in the shed full-time. Tour guide tasks included personal guided tours, cleaning, help with special events and photo/document scanning. The personal tour gives visitors a unique experience which would be impossible without our guides. The tour guides enjoyed this work and finished the year with improved public speaking skills and leadership qualities.

During the summer, we hosted an Artist in the Studio program which was successful once again. Twenty-one artists joined regular programming on Saturdays and hosted nine sessions in July and August to showcase their various styles of art, including rug hooking, painting, wood carving, and traditional music. Feedback from tourists was positive. We thank the artists for volunteering their time with us for another season.



The most successful event of the summer was the unveiling of our new exhibit, *They Came for the Fish, and Stayed for the Stages*, which took place on June 27th. The event was attended by 118 people. Many thanks to Rhoda Hedd for participating in the Opening Ceremonies.



A kitchen party, which was an auction item at the 2015 Gala, was held at the SUF Lodge on June 27th. An evening of food and music was enjoyed by all in attendance. We thank Melvin Green and Friends for providing the entertainment.

Workshops were well attended in 2015, having full classes for both week-long sessions. The day-long sessions were also well attended, with seven sessions hosting twenty-seven participants, including the “I’se the B’y” family workshop in Petty Harbour. Fourteen children attended the Children’s Workshop.

Our season was successful, boasting a 21% increase in visitor admissions and higher attendance rates for workshops at all levels.



Wooden Boat Documentation Committee

Crystal Braye, Folklorist

At the beginning of the 2015 season, we unveiled a new exhibit at our Museum in Winterton. *They Came for the Fish and Stayed for Stages* tells the story of Newfoundland and Labrador's salt cod fishery through a look at the places and spaces that supported this way of life. This exhibit describes how stages and flakes were used to process salt cod and includes photos and genealogical information that traces the history of fishing stages in Winterton back to the early twentieth century.



New interpretive panels were added to the exhibit on display in Trinity. This addition focuses on the reconstruction of a bully boat, a local style of boat that was common from Smith Sound to Trinity Bight for use with handline and trawl into the 1970s. The panels tell the story the original boat built by Joseph King in 1949, used by fisherman Sidney Miller until 1970 and then carefully reconstructed by Lance Short in 2000.

Documentation work for the 2015 season focused primarily on Vernon Petten, boat builder and fisherman from Port de Grave, Conception Bay. This work culminated with a staged interview with Vernon at last year's Annual Wooden Boat Conference. Additional oral history documentation was conducted with Edwin Bishop in Heart's Desire. All interviews have been

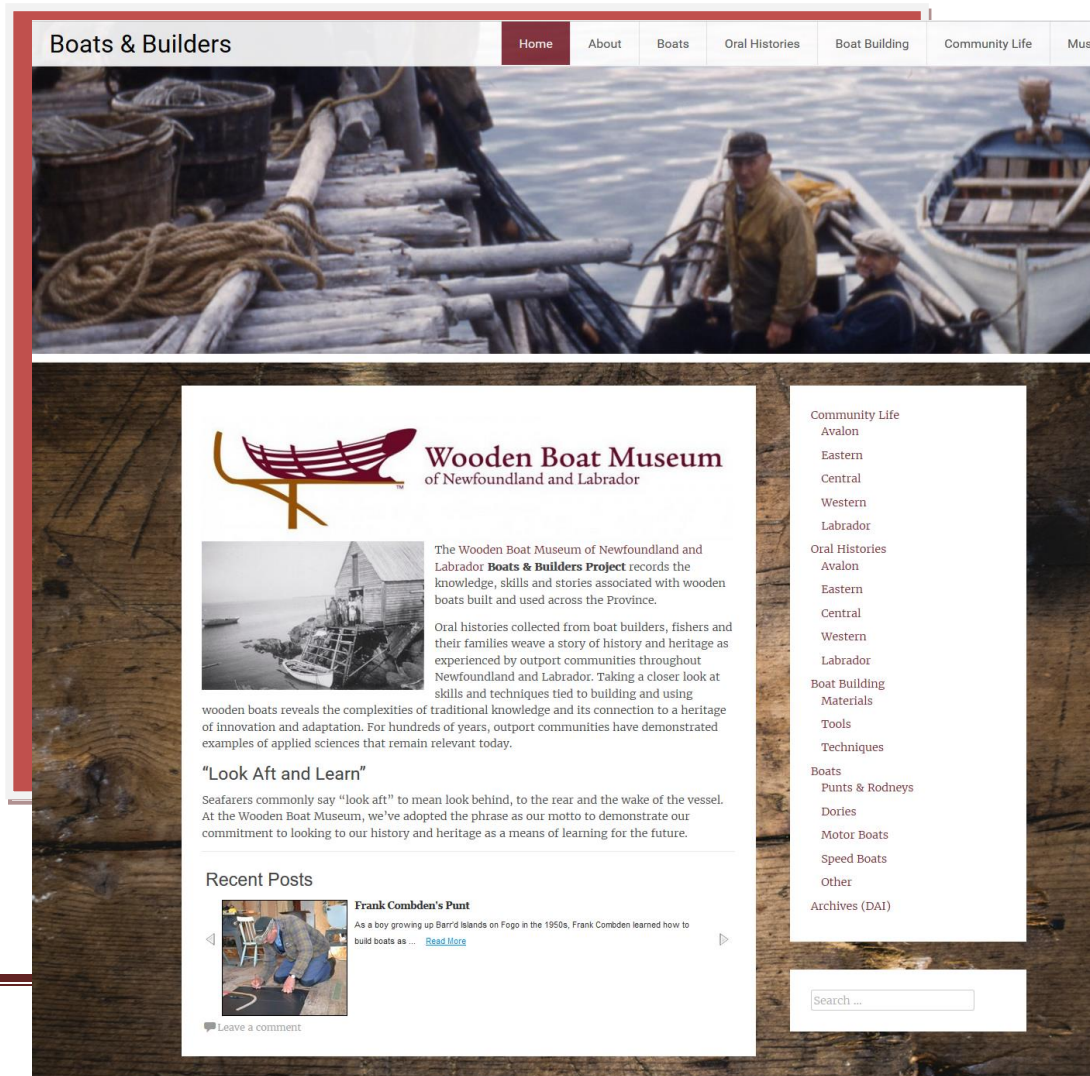


archived on Memorial's Digital Archive Initiative and profiles have been added to our website.

Work completed by our Naval Architecture student this season includes the creation of tables of offsets for all lines plans in WBMNL's collection. This work will help move the Museum towards the goal of providing building plans for all the boats we have documented.

During the fall, folklorist Crystal Braye and director Bruce Whitelaw took part in a 5-day *Process of Interpretive Planning Workshop* offered by National Association for Interpretation. Hosted by the Vancouver Aquarium, the program taught key essentials in interpretive planning and included practicums designed to apply new knowledge in the development of an interpretive plan for the host site. Following this training, an interpretive plan was developed for WBMNL that provides a comprehensive vision for the Museum in Winterton. This document identifies thematic goals, educational objectives and visitor experience opportunities, and will guide the development of new exhibits and programs.

In February 2016, our website *boatsandbuilders.com* was redesigned to improve usability and allow for better content organization. Relaunched in early March, new content will continue to be posted biweekly that focus on oral histories, community life, boat building and boats documented by WBMNL.



The screenshot displays the website's interface. At the top, a navigation menu includes links for Home, About, Boats, Oral Histories, Boat Building, Community Life, and Mus. Below the menu is a large header image of a boat on the water. The main content area features the Wooden Boat Museum logo and a section titled "The Wooden Boat Museum of Newfoundland and Labrador Boats & Builders Project" which describes the project's focus on recording knowledge and skills associated with wooden boats. A "Recent Posts" section highlights a post about "Frank Comben's Punt" with a small image and a "Read More" link. On the right side, there is a vertical navigation menu with categories like Community Life, Oral Histories, Boat Building, and Boats. A search bar is located at the bottom right.

Wooden Boat Building Workshop Committee

Jim Dempsey, Chair

2015 Summer Season

For the summer season of 2015, the objectives of the workshop program were to:

- Continue to offer standardized workshop programs at the WBMNL in Winterton;
- Continue in the development of a series of standard workshop programs that can be delivered to museum visitors by relatively inexperienced instructors;
- Promote the WBMNL initiative to partner with like-minded organizations in the province through the support of standard workshops that can be delivered to visitors using local instructors;
- Encourage youth to participate in workshops to create a new generation of small boat enthusiasts; and to
- Encourage the enjoyment and use of traditional Newfoundland small craft through scheduled summer outings on the water.

During the summer season, three levels of workshop were offered in the WBMNL Boatshed:

- Five-day sessions in which participants either built a 17ft. dory or learned the fundamentals of punt building
- Saturday sessions in which participants were exposed to one aspect of punt building; and
- Thursday afternoon workshops for children in which the participants learned something about hand tools, constructed a mock dory as a team, and were introduced to the concept of vessel stability using toy boats they received as part of the workshop.

Participation was better than the previous year:

- Punt Workshop – June 15-19th – 7 Participants
- Dory Workshop – Sept 14-18th – 10 Participants
- Seven one day workshops were held with a total of 19 participants; and
- 14 children participated in our Children's Workshops.

In partnership with Fishing for Success, WBMNL held its first family workshop on August 12th. Two families gathered at Island Rooms in Petty Harbour on a sunny Saturday in August to assemble a pre-fabricated dory, row a finished dory on the harbour, and enjoy local seafood. The workshop attracted the attention of both locals and tourists. Thanks to Kimberly and Leo at Island Rooms for being such good hosts and partners.

Marketing

In collaboration with local tourism providers, WBMNL developed all-inclusive workshop packages for participants who want to stay in the area during our weekend and five-day workshops. WBMNL needs this type of partnership initiative to encourage to increase visitation.

St.Pierre et Miquelon Bi-Centennary

In October, 2015, Jerome, Crystal, and Jim travelled to St. Pierre et Miquelon at the guests of Célébrations 2016 to discuss the possibility of building an authentic dory in Miquelon during the summer of 2016. This project was to be part of the islands' bicentenary celebration. A report outlining WBMNL suggestions was delivered but the shop intended for the project was destroyed by fire before the program could begin.



While in St. Pierre, the Museum team was introduced to the organizing committee for *Ternua 2017*, a project in which rowers from St. Pierre et Miquelon, Quebec, the Basque Country, and Newfoundland and Labrador will row a 12-oared Trainière from Placentia to St. Pierre over a 10-day voyage.

Maderra Punt



WBMNL was approached by Maderra, an offshore marine engineering company, to build a small punt that would be displayed in their St. John's office to serve as an icon for the boat building tradition of this province.

The boat that Jerome built is a half-scale generic punt that had been designed using the traditional three-piece mould method that is part of the WBMNL logo.

The final product is not only a striking addition to the Maderra reception area, it is a statement of the meeting of traditional and contemporary design techniques.

2016 Objectives

Primary objectives of the 2016 Workshop Program:

Signature Boats

The workshop program will benefit from the development of standardized designs for the punts and dories built by our participants. The designs will be selected on the basis of:

- Potential for instruction by a boat builder with modest experience;
- Training value for participants;
- Efficiency of construction to fit into available time periods using available materials; and
- Relevance to other museum programs and displays

Student Training

With the return of George Butt as the dedicated Boatshed student, WBMNL has an opportunity to assess the capacity for a student to become competent in selected boat building skills. Understanding the need for increasing our existing boat building capacity and the need for succession planning, training of boat building staff is a critical issue for WBMNL. Current funding and the return of the Boatshed student will allow us to make a start in this direction.

Preparation for the 2016 Summer Season

Two documents were prepared for the 2016 workshop program:

2016 Workshop Program Vision Statement

This document has been prepared to provide direction for the WBMNL workshop program. The document is not a plan for actual activities but, rather, a vision of:

- How workshops contribute to the interpretation of the heritage of the wooden boat in Newfoundland and Labrador: and
- What workshops offered by WBMNL are expected to accomplish

2016 Workshop Implementation Plan

This document is a plan which provides a practical outline to the implementation of the 2016 WBMNL workshop program. The plan describes actual activities and a summary of costs and anticipated revenue. The plan is consistent with the *2016 WBMNL Workshop Program Vision Statement* and *2016 WBMNL Implementation Plan*.



Special Events

Conference 2015 – Harbour Grace, NL

8th Wooden Boat Conference was held in Harbour Grace on September 11-12th. To kick off this year's conference Legendary Coast Eastern NL DMO hosted a Tourism Breakfast at 9:30 AM at the Harbour Grace Marina. After the breakfast, training began for our Heritage Skills Challenge. We take this opportunity to thank our Heritage Skills participants and especially the skills instructors:

Vern Petten – Port de Grave – Net Netting
Alf Manual – Twillingate – Whiff maker
Leo Hearn – Petty Harbour – Fish Filleting
Frank French / Melvin Green – Winterton – Sculling
Darcy Harte – Cape Breton – Rowing

Friday's events concluded with our Meet and Greet - a fabulous meal prepared by Harbour Grace Ocean Enterprise's Chef – Kory Brockway. Many thanks to Harbour Grace Ocean Enterprises for sponsoring the Meet and Greet.

Saturday's sessions began at the Harbour Breeze with a presentation by Legendary Coast DMO on Cultural Tourism Opportunities on the Baccalieu Trail. Bruce Whitelaw followed with an update on the progress of the International Conference being planned for Trinity in 2016. The morning concluded with the boat builder demonstrations.



Jerome Canning and Jim Dempsey began the afternoon sessions with a presentation on their trip to Pasaia, Spain earlier this year where Jerome had an opportunity to participate in the building of the San Juan Replica.



The final session for the day highlighted Longtime Boat Builder and Fisherman – Vern Petten. Three of Vern’s children – Ros, Iris and Ivy – began by telling stories they remembered about their father, followed by an interview with Vern by Crystal Braye.

Conference concluded with a Conference Dinner and Kitchen Party, hosted by Melvin Green. Many thanks to Garry Gosse and his staff at the Harbour Breeze for the fantastic service and great food.



Special Events

Spouses Program (submitted by Lona Stone)

Saturday morning was rainy, therefore the spouses' agenda had to be altered. Instead of doing a walking tour of the Heritage District of Harbour Grace, we met at the Conception Bay Museum and the Board Chairperson, Pat Collins, gave a tour of the Museum and shared his expert knowledge with a humorous and informative talk about the history and the collection held in the former customs house.

The spouses returned to the Harbour Breeze where they joined the conference attendees for lunch. Chef Gary Gosse and his staff served the perfect meal for a wet day, soup, sandwiches and dessert! Delicious!

Fortified, the spouses made their way to DozenOdd Galleries on Water Street in Carbonear. Paula Flood and Natalie Austin greeted us and Paula proceeded to teach us the heritage craft of braiding and sewing together a trivet. Everyone was quite enthusiastic to see who could get their 14 feet of braiding done first! Our afternoon was spent with lots of laughter and friends helping friends learn a new, old skill. Of course, Paula and Natalie could not let the afternoon go by without a cup of tea and sweets! Thank you ladies, it was a fantastic treat to visit and view the beautiful handmade crafts and art work done by local artisans of Newfoundland and Labrador.

The day ended back at the Harbour Breeze in Harbour Grace with the Conference Dinner followed by a Kitchen Party. Again, the meal was superb and thoroughly enjoyed by everyone as was the music of the many exceptionally talented local musicians. Many thanks are extended to all who helped to make the spouses events so memorable, entertaining and worthwhile!



Special Events

Heritage Skills Competition

As an organization, we pride ourselves on the preservation of intangible cultural heritage in Newfoundland and Labrador. Our Motto is Look Aft and Learn, and we like to give everyone a chance to participate hands on in the skills we work so hard to preserve. It was in this spirit that the heritage skills competition was born at the Annual Conference in September.



The brain child of board member Bruce Whitelaw, delegates at the conference were given the chance to observe experts in the traditional methods of knitting nets, tying a withe, filleting a fish, sculling a punt, rowing a punt and hauling a lobster pot! All of these newly learned skills were going to be put to the test at the Heritage Skills Challenge later in the afternoon.



After a tasty fish and brewis lunch (many thanks to Chef Howard Cooper), six teams geared up for the Heritage Skills Challenge. Some of the spouses were members of the teams and as they awaited their turn, there was much laughter and lots of chatter as friends caught up on the news since the last Wooden Boat conference. The marina attracted lots of onlookers, curious tourists, politicians and locals as there was

friendly cheering and jeering to urge on the teams and an overall genuine feeling of great camaraderie was evident as the Challenge took place.

After the points were tallied and egos and pride were dashed by many, Team Harbour Grace Ocean Enterprise were awarded first prize for their skills and their spirit.



WBMNL Receives Cultural Tourism Award

The Cultural Tourism Award was presented at 2015 Hospitality NL's Annual Conference. The Museum is honored to be part of the great group of previous winners.

Hospitality NL's press release stated:

"The Cultural Tourism Award is presented to an individual or organization that recognizes and promotes the pursuit of cultural expression within the tourism industry.

The Wooden Boat Museum of Newfoundland and Labrador, situated in Winterton, has a provincial focus, celebrating and preserving the province's knowledge and history of the wooden boat. Featuring beautiful exhibits, curated artifacts, recreations of historically important wooden boats and a replica of a boat building workshop, they have become a major tourism asset on the Baccalieu Trail".

WBMNL continues to build a variety of visitor experiences essential to the growth of the Museum and our Community Partners across the Province.

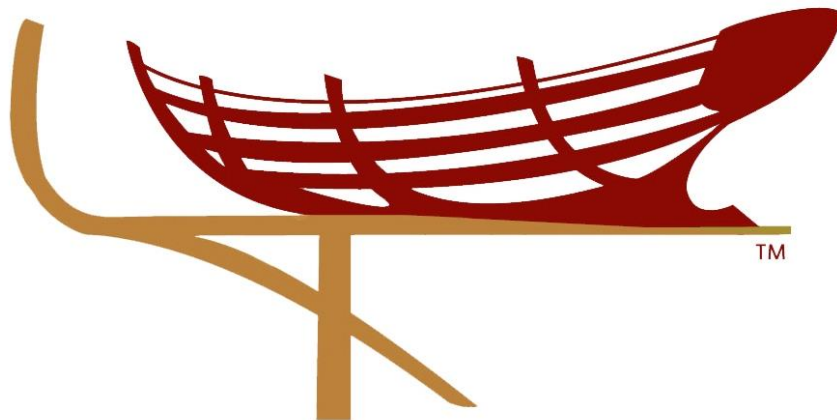
Chris Osmond, Vice Chair, accepted the award on behalf of the Museum.



2015 – 2016 Board of Directors

Wooden Boat Museum of Newfoundland and Labrador

Chair / President	Jim Dempsey
Vice Chair / Vice President	Chris Osmond
Treasurer	Wallace Pinhorn
Secretary	Beverley King
Directors	Chris Brooks
	Barry Darby
	Heather Elliott
	Everett Fancey
	Frank French
	Rhonda McMeekin
	Ray Piercey
	Heather Wareham
	Bruce Whitelaw



Our Members

Honorary Life Members

Vokey, Henry	Trinity	NL
Cass, Hilary	Bristol's Hope	NL
Green, Melvin	Winterton	NL

Life Members

Short, Gregory	New Bonaventure	NL
----------------	-----------------	----

Benefactors

Anne, John	Halifax	NS
Campbell, Lindsay	Halifax	NS
Clarke, Lonel & Murray, Debra	St. John's	NL
Dempsey, Jim & Catherine	Flatrock	NL
Donnelly-Hyde, Sarah	Hamilton	ON
Flynn, Anthony	CBS	NL
Green, Shirley	Winterton, NL	NL
Morrif, Ian	Halifax	NS
Osmond, Chris & Kim	Durrell	NL
Patey, John	Colinet	NL
Pinhorn, Wallace & Rosanne	St. John's	NL
Shepard, Peter	Toronto	ON
Templeton Christina	St. John's	NL
Wheeler, Ewen	Happy Valley Goose Bay	NL

Our Members

Community Partners

Heritage Foundation of NL	St. John's	NL
Historic Sites Assoc. of NL	St. John's	NL
Isles Wooden Boat Building Committee	Twillingate	NL
Municipality of Trinity Bay North	Port Union	NL
Northern Boat Repair	Port Saunders	NL
S.U.F. No. 2 Winterton	Winterton	NL
Town Council of Point of Bay	Point of Bay	NL
Town of Arnold's Cove	Arnold's Cove	NL
Town of Bonavista	Bonavista	NL
Town of Come By Chance	Come By Chance	NL
Town of Fortune	Fortune	NL
Town of Glenwood	Glenwood	NL
Town of Glovertown	Glovertown	NL
Town of Hant's Harbour	Hant's Harbour	NL
Town of Lushes Bight-Beaumont	Beaumont	NL
Town of New-Wes-Valley	Badger's Quay	NL
Town of Old Perlican	Old Perlican	NL
Town of Petty Harbour-Maddox Cove	Petty Harbour	NL
Town of Torbay	Torbay	NL
Town of Trinity	Trinity	NL
Town of Twillingate	Twillingate	NL
Town of Whiteway	Whiteway	NL
Town of Winterton	Winterton	NL
Twillingate Islands Tourism Assoc. Inc.	Twillingate	NL
Winterton Harbour Authority	Winterton	NL

Our Members Family

Bartlett, Elses & Randy	Winterton	NL
Blackmore, David & Brenda	Newtown	NL
Blake, Robert	Mount Pearl	NL
Boyd, Kathleen	Twillingate	NL
Brown, Irene	St. John's	NL
Button, Alexander & Elmera	Woodview	ON
Carberry, Harold	Burgoyne's Cove	NL
Coates, Kevin & Glennys	Winterton	NI
Crummey, Brenda	Torbay	NL
Diamond, Ted & Lynn	Harbour Grace	NL
Donelly, Charles	Hamilton	ON
Donnelly, Deborah	Hamilton	ON
Durno, Lori	Pepperell	MA
Dyer, William	Calgary	AB
Gibbons, Cindy & Jones, Jim	Mary's Harbour	NL
Green, Richard & Jill	Torbay	NL
Hauser, Ernie	St. Clements	ON
Hearn, Leo & Orren, Kimberly	Petty Harbour	NL
Hiscock, Ed & Molly	Winterton	NL
Hiscock, Gordon & Joan	Winterton	NL
Hiscock, Michael	Paradise	NL
Markwick, Eileen & Wright, Don	Toronto	ON
O'Byrne, Fergus	St. John's	NL
Parsons, Gerald & Maria	CBS	NL
Pinhorn, Allenby & Florence	Winterton	NL
Price, Kevin & Johnson Janet	Hillview	NL

Ryan, Bruce & Pearcey, Gail	St. John's	NL
Snelgrove, Ken & Lynette	St. John's	NL
Wareham, Mark	Paradise	NL

Our Members

Individual

Allan, Clifford	Coley's Point	NL
Allan, Wilbur	Coley's Point	NL
Arscott, David	St. John's	NL
Barrett, Hal	St. John's	NL
Best, Sheldon	St. John's	NL
Boone, Lloyd	Point of Bay	NL
Braye, Ed	Corner Brook	NL
Braye, Gary	Corner Brook	NL
Brooks, Chris	St. John's	NL
Burry, Derrick	Portugal Cove/St. Philips	NL
Canning, Jerome	St. John's	NL
Clarke, Max	Paradise	NL
Cohen, Tim	Portugal Cove - St. Phillips	NL
Collett, Jonathan	St. John's	NL
Cooper, Les	Bay Roberts	NL
Cooper, Stephen	St. John's	NL
Cornick, Rex	Moreton's Harbour	NL
Darby, Barry	St. John's	NL
Davis, Herb	Gatineau	QC
Dawson, Patrick	Ottawa	ON
Elliott, Heather	St. John's	NL
Elliott, Sterling	Twillingate	NL
Enguehard, Joseph	St. John's	NL
Fancey, Everett	St. John's	NL
Feltham, Kirk	Ft. McMurray	AB

Fennimore, Ernest	Milton	ON
Fowlow, Douglas	Kippens	NL
French, Frank	Winterton	NL
Goodall, Chris	St. John's	NL
Goodyear, Julian E.	Portugal Cove / St. Phillips	NL
Gordon, Kevin	Glovertown	NL
Goudie, Joe	Happy Valley - Goose Bay	NL
Grant, John	Lawn	NL
Green, Ernest	Mount Pearl	NL
Green, Jeff	Shoal Harbour	NL
Green, Mary	Centreville	NS
Greene, Neil	Paradise	NL
Hallett, Bob	St. John's	NL
Harnum, Jeremy	Winterton	NL
Hiscock, Gary	Moose Jaw	SK
Hogan, Christopher	St. John's	NL
Hoskins, James	Conception Bay South	NL
Howse, Alex	Mount Pearl	NL
Igloliorte, James	St. John's	NL
Johnson, Ray	Lower Island Cove	NL
Jones, Andy	St. John's	NL
Joy, John	Happy Valley - Goose Bay	NL
Kelloway, Greg	St. John's	NL
Kelloway, Lew	Portugal Cove / St. Phillips	NL
Key, Randy	Bahamas	
King, Beverley	Winterton	NL
Kuhn, Ronald	Gander	NL
Langdon, Paul	Lawrenceton	NL

Leggo, Jim	Corner Brook	NL
Lily, George	St. John's	NL
Lockyer, Ivan	Kingston	ON
Loveys, Anthony	Torbay	NL
Mackey, Glenn	St. John's	NL
Manuel, Alfred	Twillingate	NL
Manuel, Mike	St. John's	NL
McAleese, Kevin	St. John's	NL
McCaskil, John	Riverside - Albert	NB
Mcintosh, Jerry	Toronto	ON
Mclroy, Duncan	Norris Point	NL
McMeekin-Pittman, Rhonda	Mount Pearl	NL
Meade, Roy	St. Phillips	NL
Meadows, Stephen	Dufuniak Springs	Florida
Monaghan, Garry	St. John's	NL
Morgan, Darren	Torbay	NL
Moyer, Jay	Niagara-on-the-Lake	ON
Murphy, Dave	Pasadena	NL
Noel, Peter	Kanata	ON
O'Brien, Jerry	Mount Pearl	NL
Pantella, Eugene	Wakaw	SK
Penney, Max	Manuels	NL
Petten, Shirley	Port de Grave	NL
Petten, Verdon	Port de Grave	NL
Philpott, Michael	St. John's	NL
Pickett, Ralph	Paradise	NL
Piercey, Ray	Paradise	NL
Pinhorn, Norman	Conception Bay South	NL

Pinhorn, Randy	Heart's Delight	NL
Prosciak, Mark	St. Phillips	NL
Pynn, Ian	St. Anthony	NL
Reardon, Francis	Corner Brook	NL
Ryan, Arthur	Paradise	NL
Seviour, Peter	St. John's	NL
Short, Lancelot	New Bonaventure	NL
Small, Sidney	Gander	NL
Smith, Frederick	St. John's	NL
Sullivan, Chris	Calvert	NL
Tobin, Elizabeth	Portugal Cove - St. Phillips	NL
Trickett, Dave	Paradise	NL
Veitch, Jerry	Holyrood	NL
Vokey, Joe	Trinity	NL
Vokey, Keith	Spaniard's Bay	NL
Walker, Ray	Winterton	NL
Ward, David	Woodstock	ON
Ward, James	Woodstock	ON
Wareham, Heather	St. John's	NL
Whelan, John	Fort Saskatchewan	AB
Whitelaw, Bruce	St. John's	NL
Wyse, Jim	St. John's	NL
Young, Wayne	Halifax	NS
Zentil, Dennis	Newbury Park	CA

Our Corporate Sponsors

Wooden Boat Museum of Newfoundland and Labrador

8th Annual Wooden Boat Conference

Wooden Boat Museum
of Newfoundland and Labrador

Special Thanks
to our **8th** Annual Wooden Boat
CONFERENCE
SPONSORS

GOLD SPONSOR:

Harbour Grace
OCEAN ENTERPRISES

BRONZE SPONSOR:



Harbour Authority of Harbour Grace

BRONZE SPONSOR:

Town of Winterton

BRONZE SPONSOR:

Quin Sea
FISHERIES LIMITED

MEET & GREET SPONSOR:

Harbour Grace
OCEAN ENTERPRISES

OTHER DONATIONS:

Royal Garage

OTHER DONATIONS:

GREENSEAFOODS
CANADIAN SEAFOOD PRODUCERS

CONFERENCE FUNDED IN PART BY
DEPARTMENT OF TOURISM, CULTURE & RECREATION

Newfoundland
Labrador

APPENDIX A

Audited Financial Statement Year ending March 31, 2016

Wooden Boat Museum of Newfoundland and Labrador

Wooden Boat Museum of Newfoundland and Labrador

Statement of Operations
For the Year Ended March 31, 2016

	2016	2015
Receipts		
Grants - Federal	\$ 99,018	\$ 87,652
Grants - Provincial	82,735	80,752
Grants - Other	63,882	42,347
Other revenue	20,836	25,198
Sales and admissions	18,944	17,489
Workshop fees	10,865	2,915
Membership fees	6,360	4,593
Conference fees	5,651	5,634
Donations	5,564	8,538
Gala	-	60,344
Special projects	20,000	-
	333,855	335,462
Disbursements		
Project Expenses (Note 4)	215,418	216,982
Wages and benefits	61,694	44,052
Travel expenses	10,920	15,563
Production costs	6,041	-
Professional fees	5,248	4,468
Utilities	4,225	1,988
Cost of merchandise sold	4,151	7,159
Gala	2,349	26,447
Office expenses	1,874	1,037
Miscellaneous	1,863	1,071
Honorariums	1,624	874
Interest and bank charges	1,596	1,066
Insurance	1,100	1,252
Archival	-	750
Catering	-	294
	318,103	323,003
Excess of receipts over expenditures	\$ 15,752	\$ 12,459

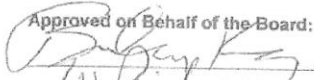
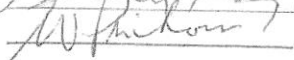
The accompanying notes are an integral part of these financial statements.

Wooden Boat Museum of Newfoundland and Labrador

Statement of Financial Position
March 31, 2016

	2016	2015
Assets		
Current Assets		
Cash	\$ 75,828	\$ 90,354
Short term investments	100,000	-
Accounts receivable (Note 2)	32,369	11,144
Inventory	9,022	12,431
Prepays	1,589	523
	218,808	114,452
Property and equipment (Note 3)	76,582	74,982
Incorporation costs	85	85
	\$ 295,475	\$ 189,519
Liabilities and Shareholders' Equity		
Current Liabilities		
Accounts payable	\$ 5,576	3,834
Deferred revenue	120,011	33,149
	125,587	36,983
Equity		
Investment in property and equipment	76,582	74,982
Net assets	93,306	77,554
	169,888	152,536
	\$ 295,475	\$ 189,519

Approved on Behalf of the Board:

 Member
 Member

The accompanying notes are an integral part of these financial statements.