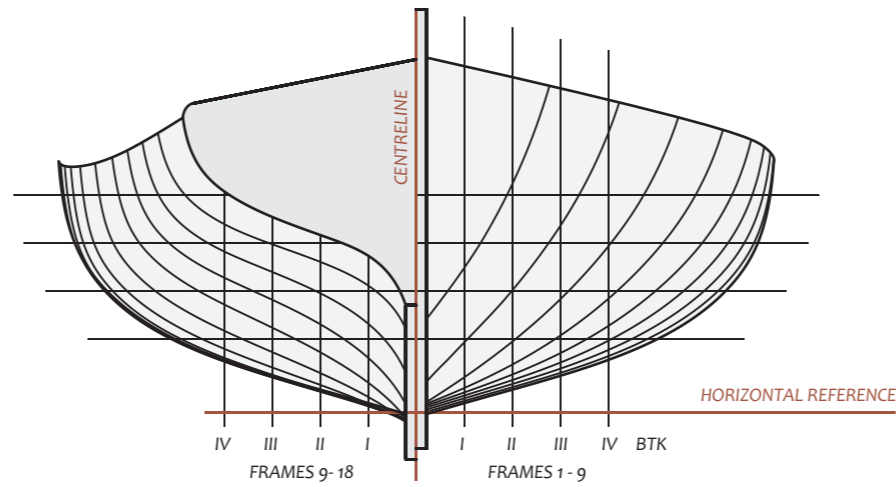
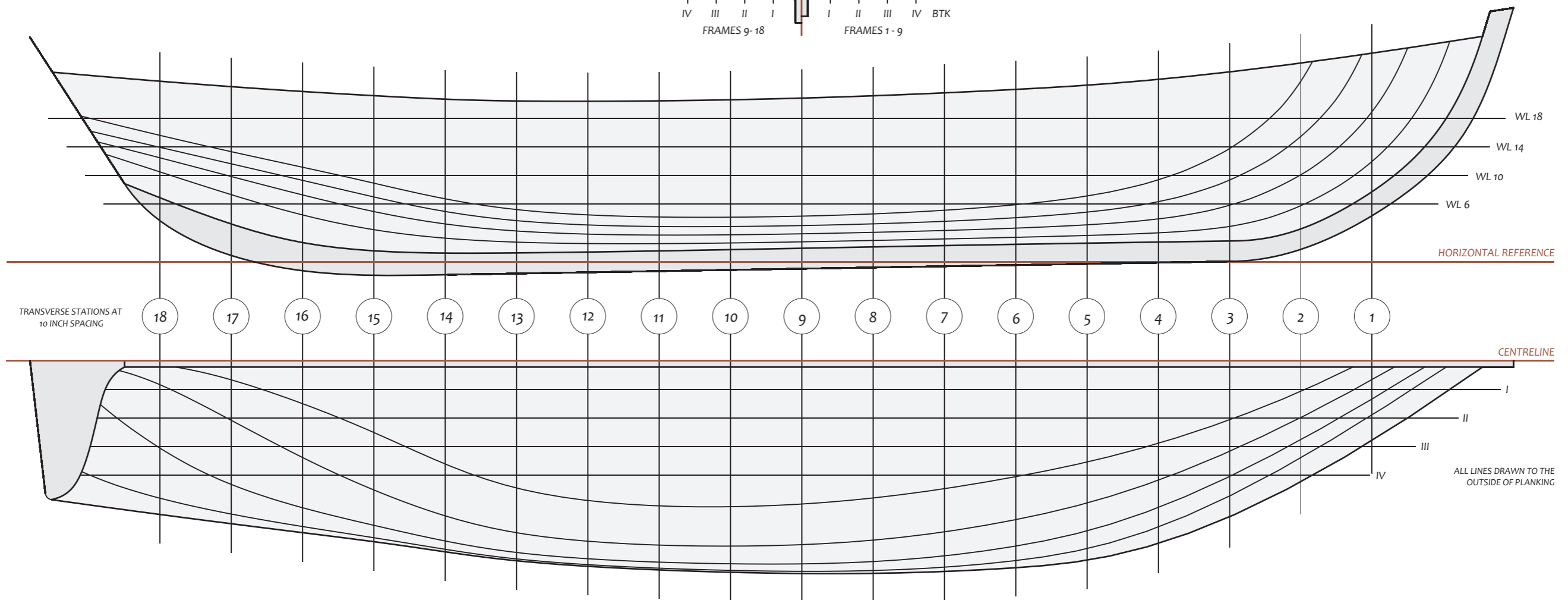


A GUNNING PUNT
 CONSTRUCTED BY
THOMAS HEAD
 OF JOE BATT'S ARM IN THE YEAR 1906



Wooden Boat Museum
 of Newfoundland and Labrador

LINES LIFTED AT THE FISHERMAN'S UNION MUSEUM
 SELDOM, FOGO ISLAND
 DURING THE SUMMER OF 2009



TRANSVERSE STATIONS AT
 10 INCH SPACING

18 17 16 15 14 13 12 11 10 9 8 7 6 5 4 3 2 1

ALL LINES DRAWN TO THE
 OUTSIDE OF PLANKING